

Inequality in the Eyes of the Beholder

Political implications of perceived inequality

Matthias Fatke
(LMU München)

*7th LCSR International Workshop
"Subjective Well-being and Growing Inequality
across the Globe"*

Moscow, 12.04.2017

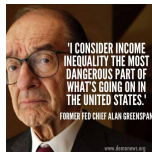
Motivation: Inequality poses great(est) threat

- ▶ At the heart of democracy
- ▶ Widespread recognition
- ▶ Growing scientific attention



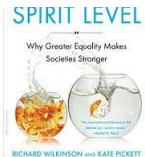
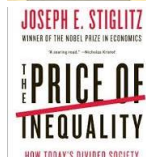
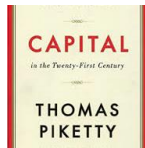
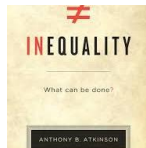
Motivation: Inequality poses great(est) threat

- ▶ At the heart of democracy
- ▶ Widespread recognition
- ▶ Growing scientific attention



Motivation: Inequality poses great(est) threat

- ▶ At the heart of democracy
- ▶ Widespread recognition
- ▶ Growing scientific attention



Argument: Don't overestimate the human brain



Argument: Don't overestimate the human brain

- ▶ Inequality *relative to* individual situation
 - ▶ Gini, individual situation, and political trust
 - ▶ Self-interest or system justification?
 - ▶ Evidence from WVS (all waves) and SWIID
- ▶ Inequality *perceived* differently
 - ▶ Gini, individual situation, and perceptions
 - ▶ Missing micro-foundation!
 - ▶ Evidence from ISSP (1992, 1999, 2009) and SWIID

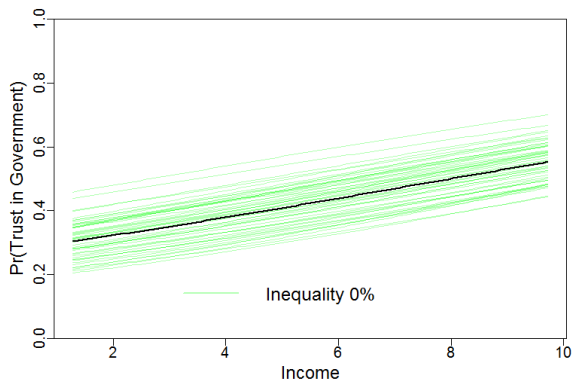
Argument: Don't overestimate the human brain

- ▶ Inequality *relative to* individual situation
 - ▶ Gini, individual situation, and political trust
 - ▶ Self-interest or system justification?
 - ▶ Evidence from WVS (all waves) and SWIID
- ▶ Inequality *perceived* differently
 - ▶ Gini, individual situation, and perceptions
 - ▶ Missing micro-foundation!
 - ▶ Evidence from ISSP (1992, 1999, 2009) and SWIID

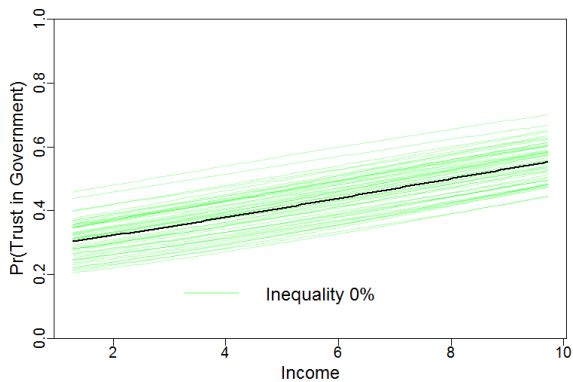
Argument: Don't overestimate the human brain

- ▶ Inequality *relative to* individual situation
 - ▶ Gini, individual situation, and political trust
 - ▶ Self-interest or system justification?
 - ▶ Evidence from WVS (all waves) and SWIID
- ▶ Inequality *perceived* differently
 - ▶ Gini, individual situation, and perceptions
 - ▶ Missing micro-foundation!
 - ▶ Evidence from ISSP (1992, 1999, 2009) and SWIID

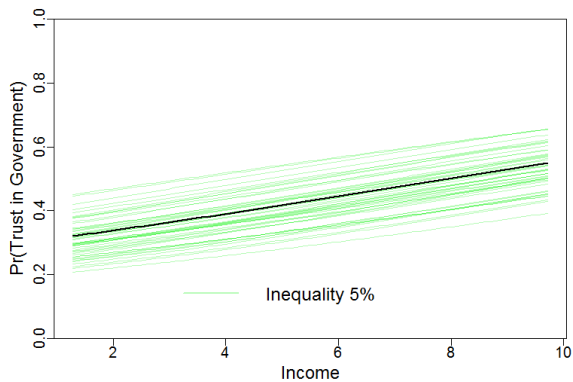
Empirics I: Marginal probability initially positive



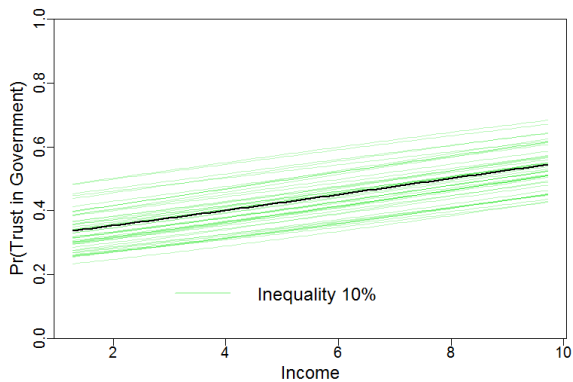
Empirics I: ... but changing



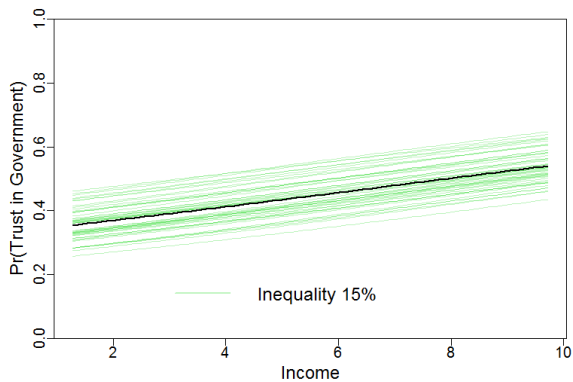
Empirics I: ... but changing



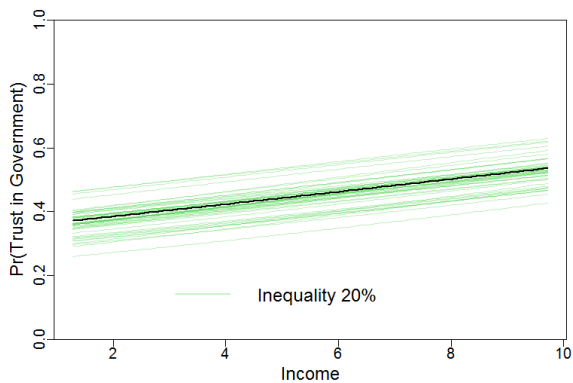
Empirics I: ... but changing



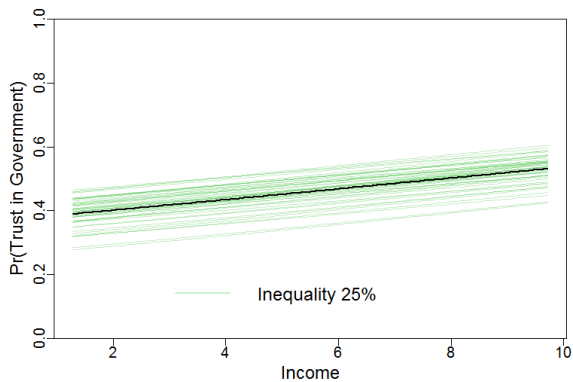
Empirics I: ... but changing



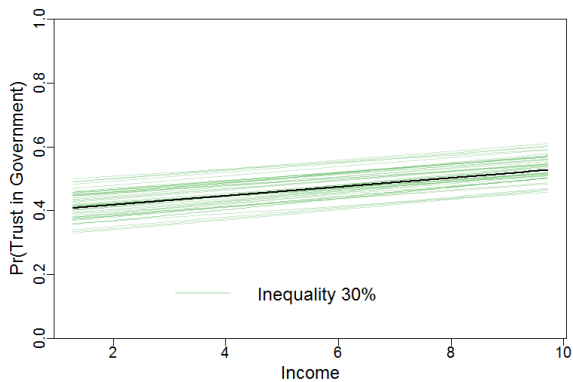
Empirics I: ... but changing



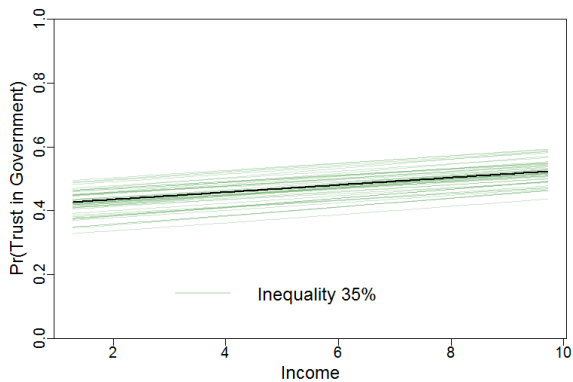
Empirics I: ... but changing



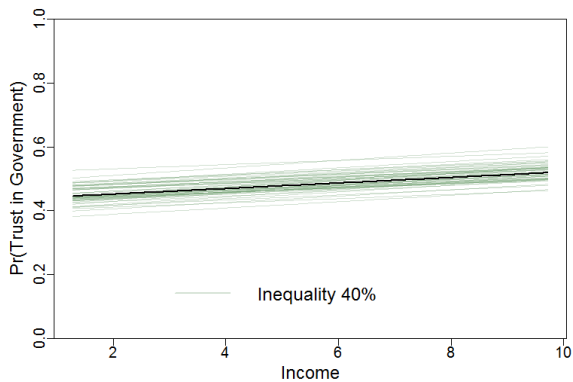
Empirics I: ... but changing



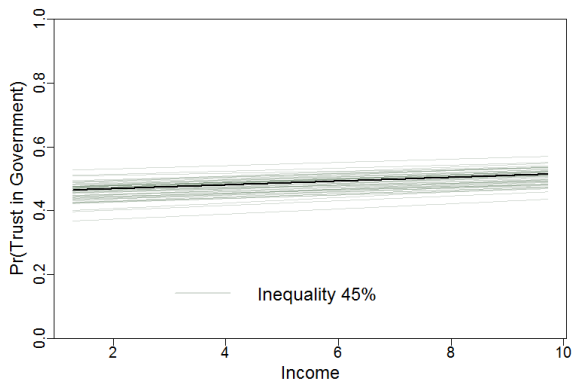
Empirics I: ... but changing



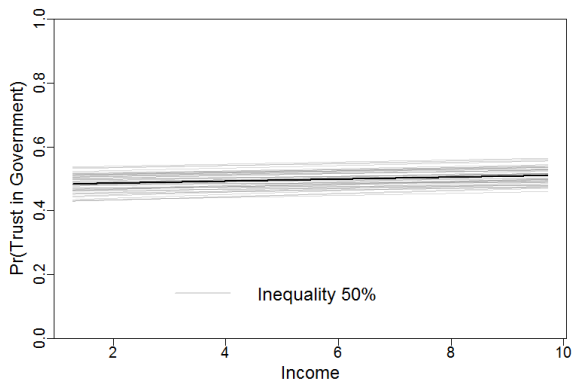
Empirics I: ... but changing



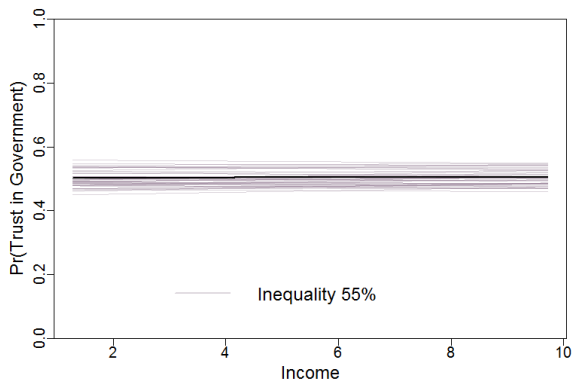
Empirics I: ... but changing



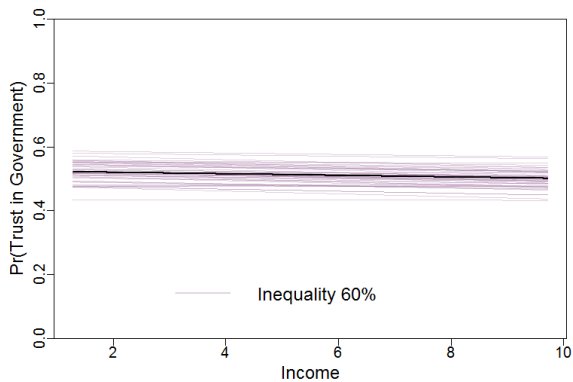
Empirics I: ... but changing



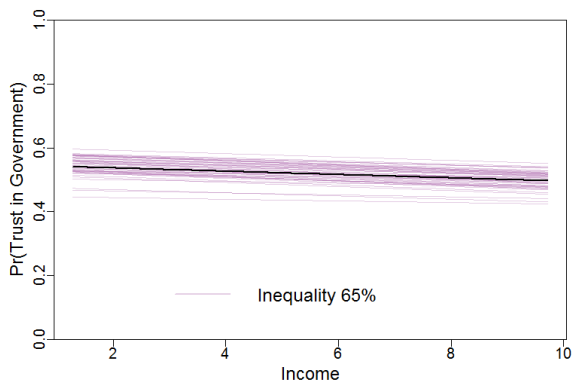
Empirics I: ... but changing



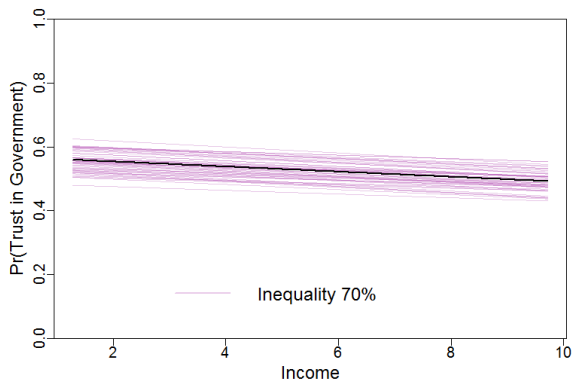
Empirics I: ... but changing



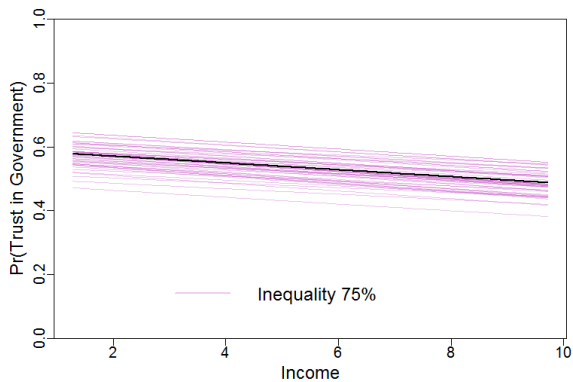
Empirics I: ... but changing



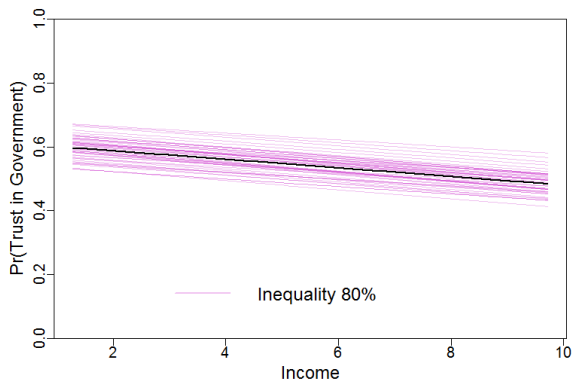
Empirics I: ... but changing



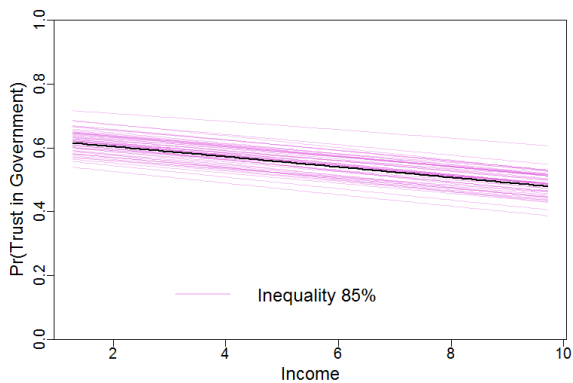
Empirics I: ... but changing



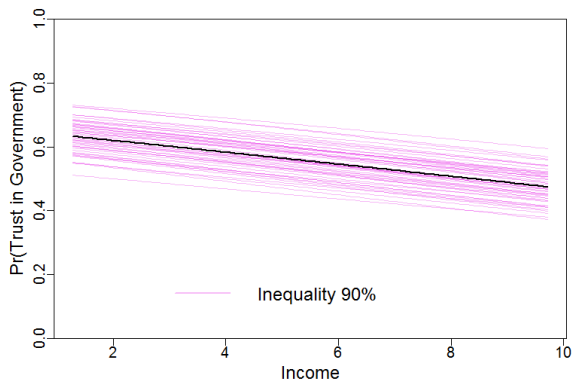
Empirics I: ... but changing



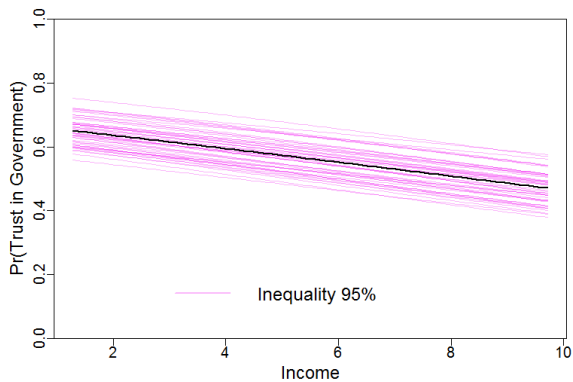
Empirics I: ... but changing



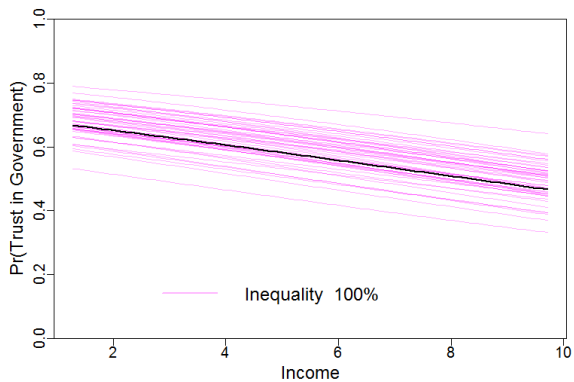
Empirics I: ... but changing



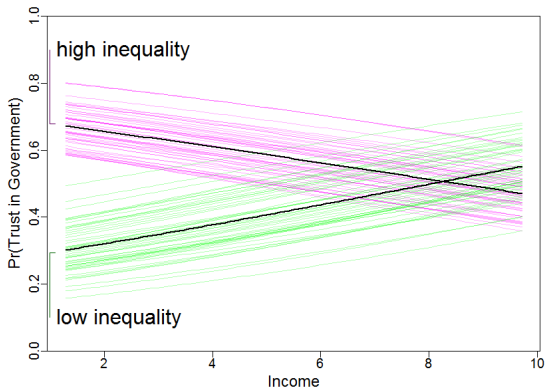
Empirics I: ... but changing



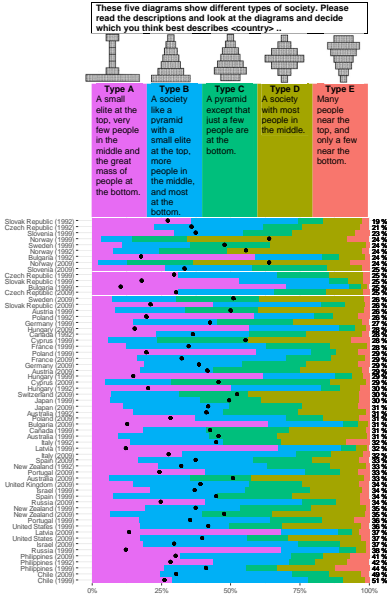
Empirics I: ... but changing



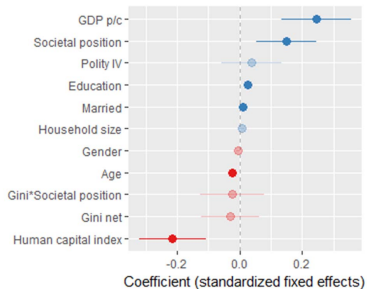
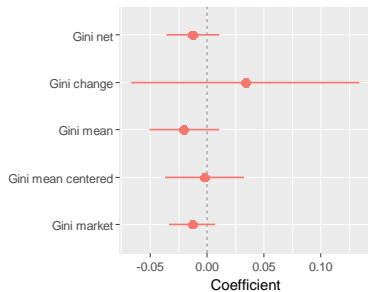
Empirics I: Differences are substantial



Empirics II: Perceptions are a different story



Empirics II: ... and not even moderated



Road Ahead: More to come than is past

- ▶ Political behavior
 - ▶ Perceptions more influential than Gini
 - ▶ Training predictor (ANN, SVM) or own survey
- ▶ Information processing
 - ▶ Perceptions following party cues
 - ▶ Experimental treatment (MTurk, Lab)
- ▶ Implications for inequality itself
 - ▶ Overestimation necessary for reduction
 - ▶ Effect on issue salience, policy decisions

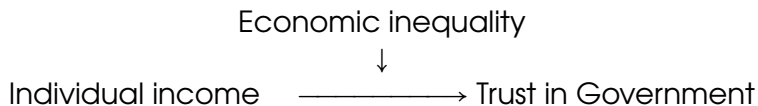
Road Ahead: More to come than is past

- ▶ Political behavior
 - ▶ Perceptions more influential than Gini
 - ▶ Training predictor (ANN, SVM) or own survey
- ▶ Information processing
 - ▶ Perceptions following party cues
 - ▶ Experimental treatment (MTurk, Lab)
- ▶ Implications for inequality itself
 - ▶ Overestimation necessary for reduction
 - ▶ Effect on issue salience, policy decisions

Road Ahead: More to come than is past

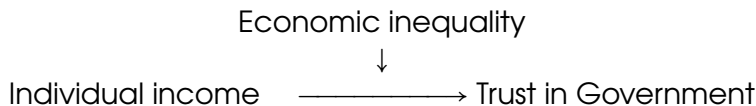
- ▶ Political behavior
 - ▶ Perceptions more influential than Gini
 - ▶ Training predictor (ANN, SVM) or own survey
- ▶ Information processing
 - ▶ Perceptions following party cues
 - ▶ Experimental treatment (MTurk, Lab)
- ▶ Implications for inequality itself
 - ▶ Overestimation necessary for reduction
 - ▶ Effect on issue salience, policy decisions

Design: Two-fold strategy



- ▶ Comparative strategy
 - ▶ WVS waves 1-6, SWIID (Solt 2016)
 - ▶ 68 countries, 145 country-years, 187,476 individuals
 - ▶ Three-level logit models with cross-level interactions
- ▶ Experimental strategy
 - ▶ LISS survey experiment in 2012 (Gallego 2016)
 - ▶ 1484 cases, 544 cases treated
 - ▶ Treatment groups: High v low income breaks

Design: Two-fold strategy

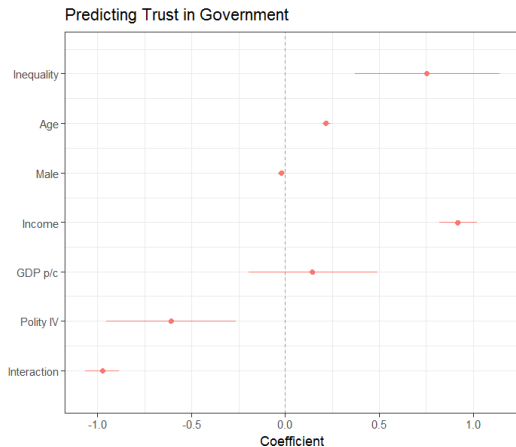


- ▶ Comparative strategy
 - ▶ WVS waves 1-6, SWIID (Solt 2016)
 - ▶ 68 countries, 145 country-years, 187,476 individuals
 - ▶ Three-level logit models with cross-level interactions
- ▶ Experimental strategy
 - ▶ LISS survey experiment in 2012 (Gallego 2016)
 - ▶ 1484 cases, 544 cases treated
 - ▶ Treatment groups: High v low income breaks

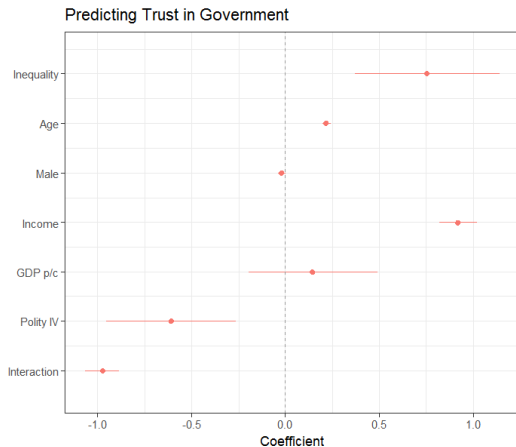
Experimental results: However, no difference

	Low inequality	High inequality	Difference high-low
Low income (1 – 2 quintiles)	4.56 (0.21) N = 143	4.53 (0.21) N = 153	-0.03 (0.30) N = 296
High income (3 – 5 brackets)	5.39 (0.13) N = 267	5.26 (0.13) N = 277	-0.13 (0.19) N = 544

Results I: Interaction negative



Empirics I: Interaction negative



Empirics: Similar result for redistribution

