

# The MYTH of Decon- solidation:



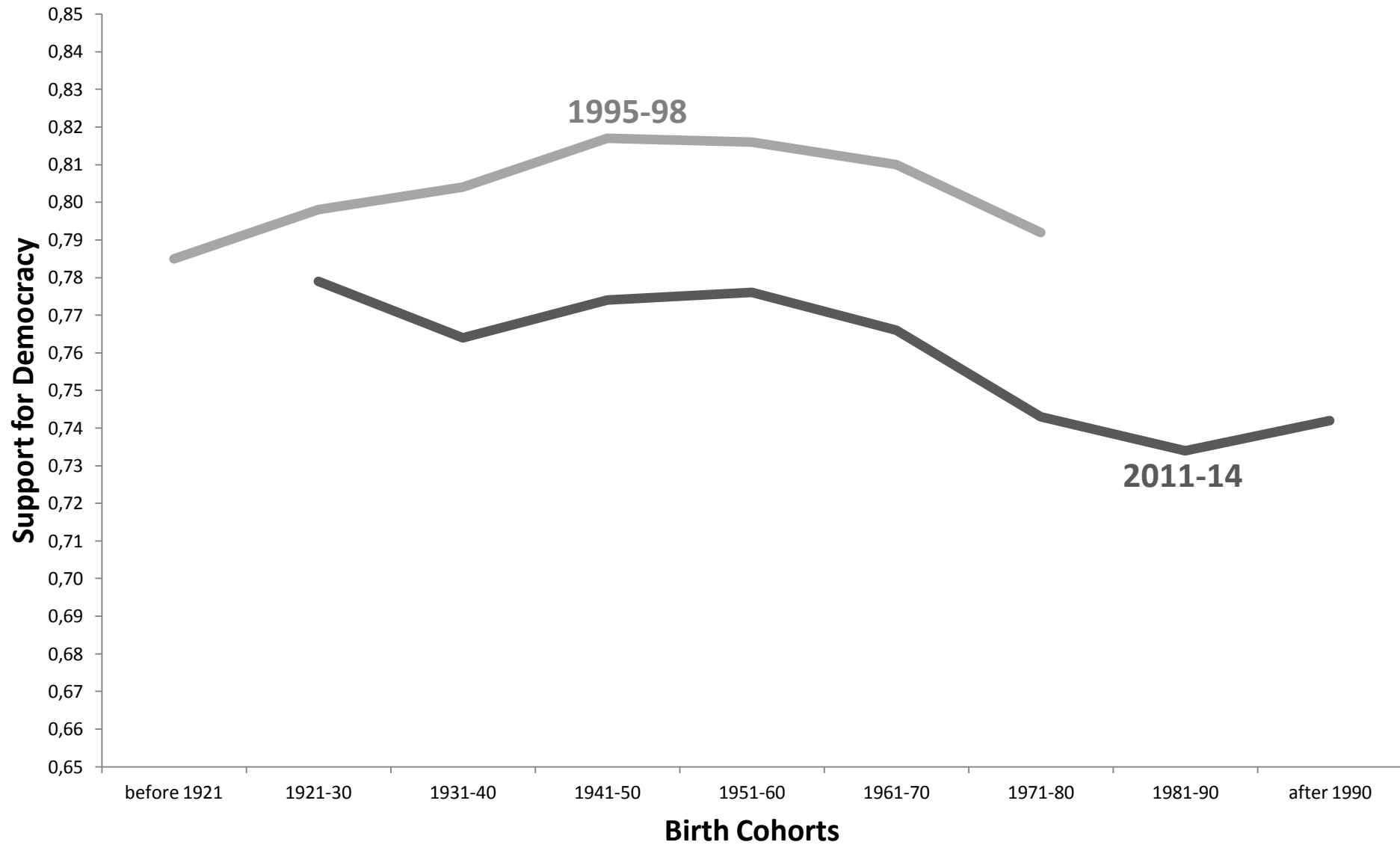
## *Rising Liberalism and the Populist Reaction*



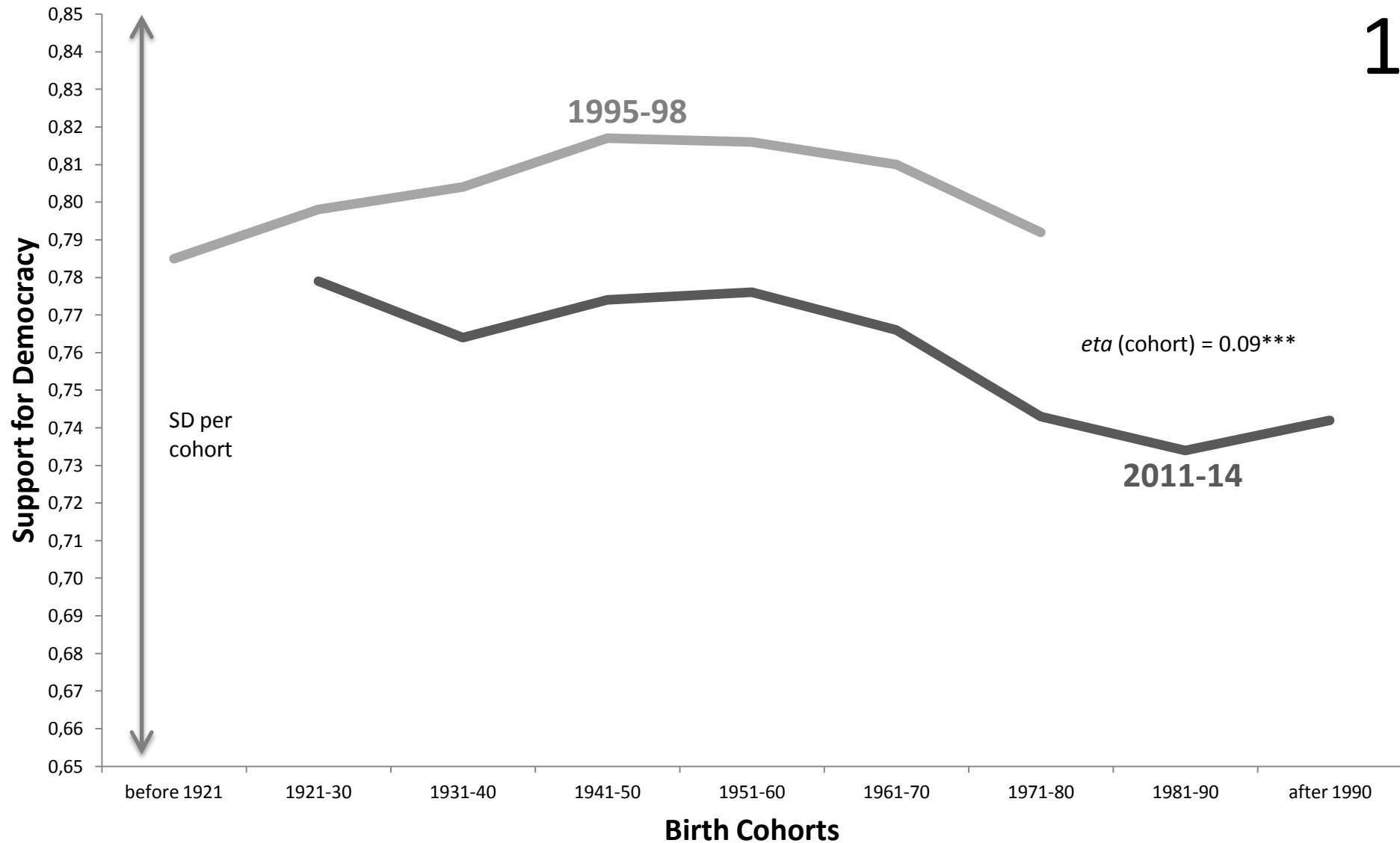
CHRISTIAN WELZEL  
([cwelzel@gmail.com](mailto:cwelzel@gmail.com))

LCSR, April Workshop,  
Moscow, 2017

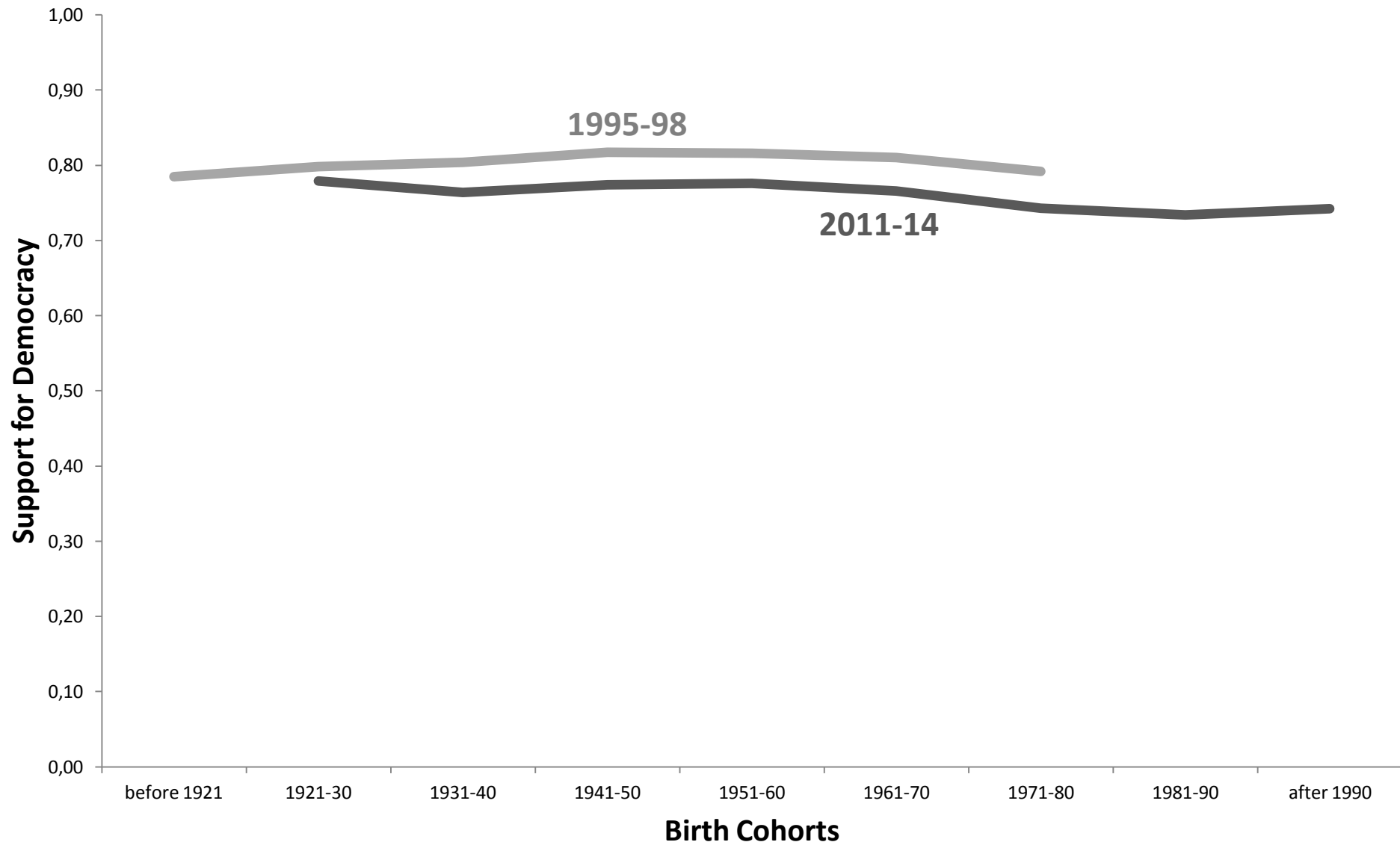




*Note:* Support for democracy and rejection of autocracy (army rule, strong leader) in key mature democracies consistently surveyed in WVS rounds 3 to 6 (Argentina, Australia, Germany, Japan, Netherlands, Spain, South Korea, Sweden, USA). Countries weighted to equal sample size (pooled  $N = 18,000$ ).

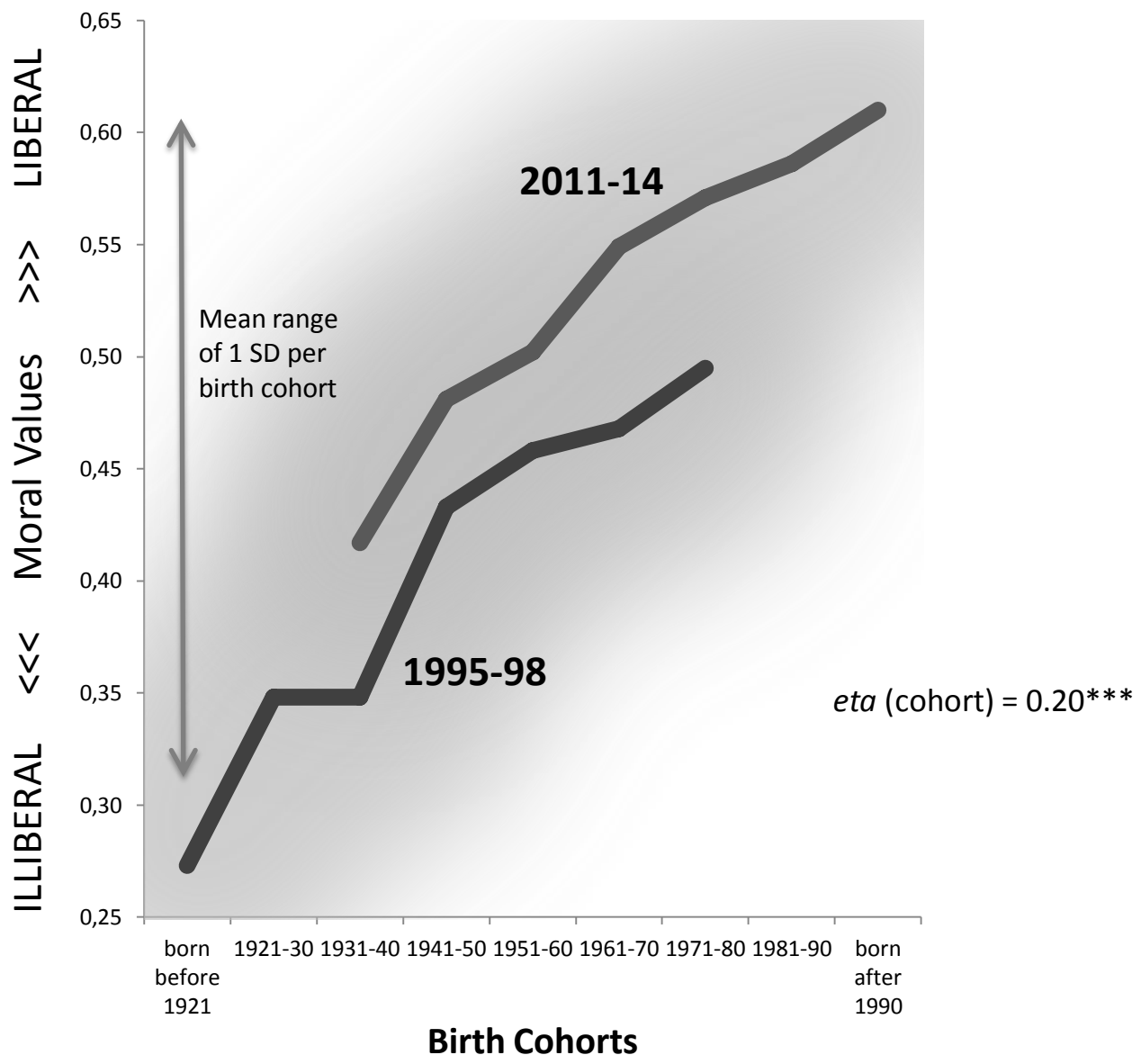


*Note:* Support for democracy and rejection of autocracy (army rule, strong leader) in key mature democracies consistently surveyed in WVS rounds 3 to 6 (Argentina, Australia, Germany, Japan, Netherlands, Spain, South Korea, Sweden, USA). Countries weighted to equal sample size (pooled  $N = 18,000$ ).



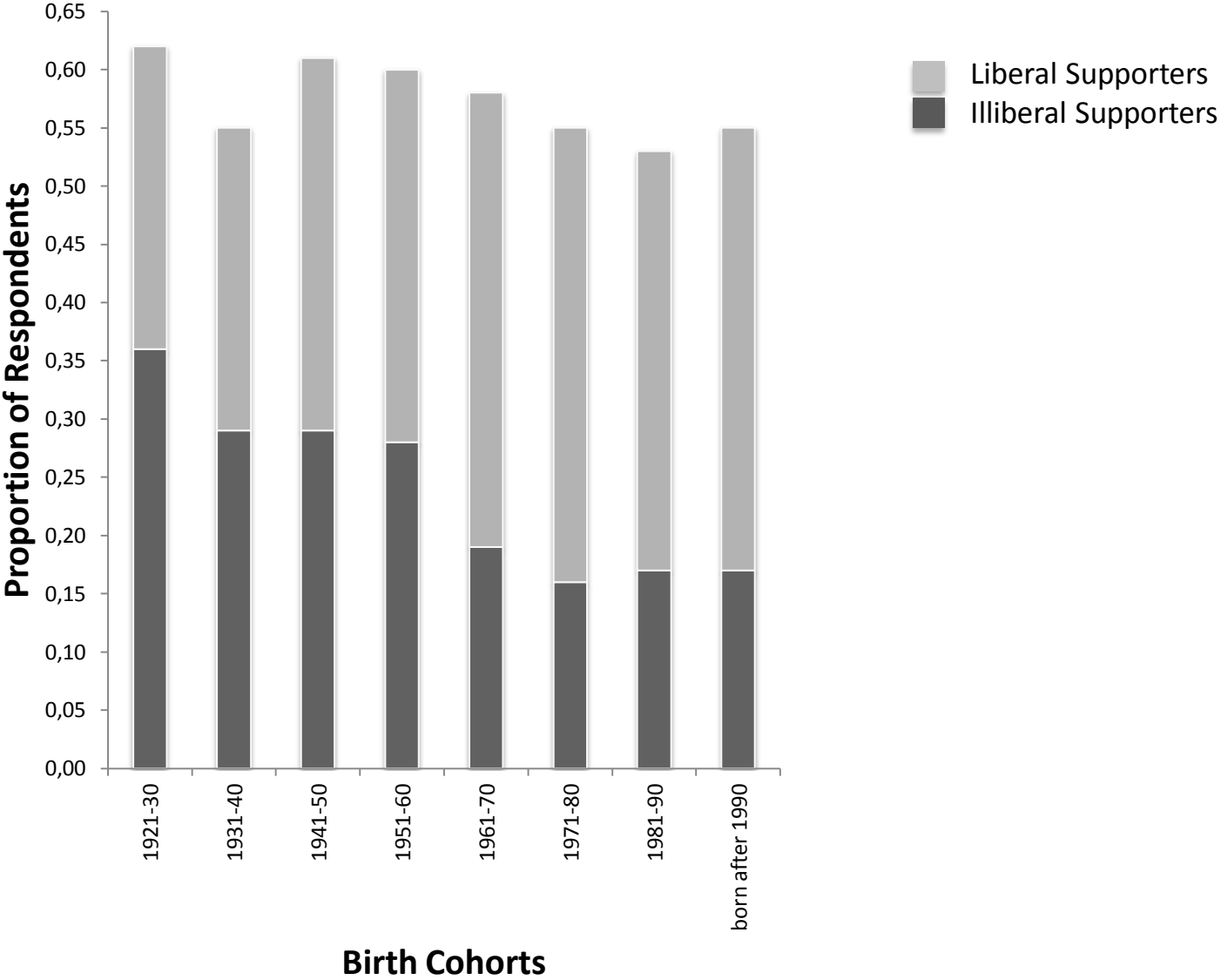
*Note:* Support for democracy and rejection of autocracy (army rule, strong leader) in key mature democracies consistently surveyed in WVS rounds 3 to 6 (Argentina, Australia, Germany, Japan, Netherlands, Spain, South Korea, Sweden, USA). Countries weighted to equal sample size (pooled  $N = 18,000$ ).

Figure 1. The Rise of Liberal Values



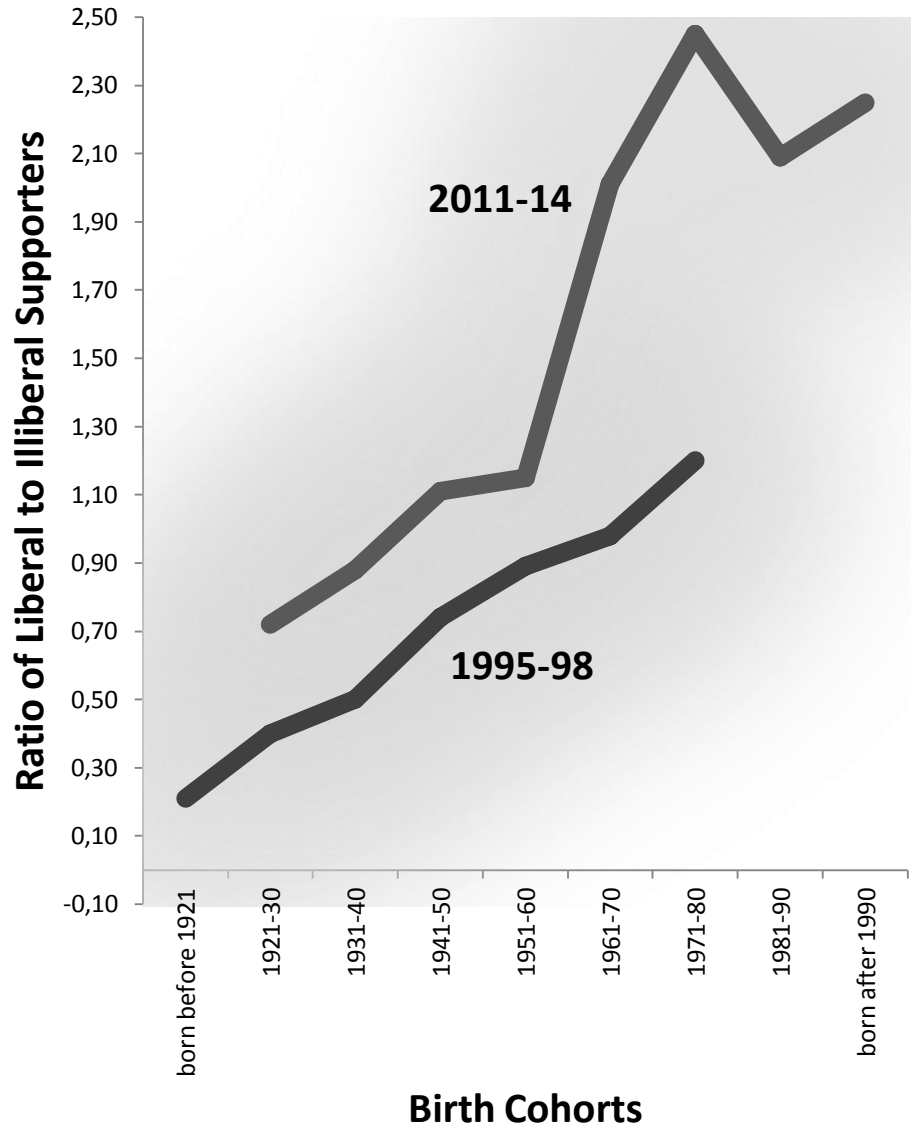
Note: Vertical axis measures for respondents of the same birth cohort their average endorsement of homosexuality, abortion and divorce as tolerable choices on a scale ranging from a theoretical minimum of 0 to a maximum of 1, as explained in endnote 17. Data source is EVS/WVS rounds 3 and 6, pooling samples from Argentina, Germany, Japan, South Korea, Spain, Sweden, the US, weighting each sample to an equal N of 1,000 per round (pooled N ≈ 14,000).

Figure 2. The Changing Moral Composition of Supporters of Democracy



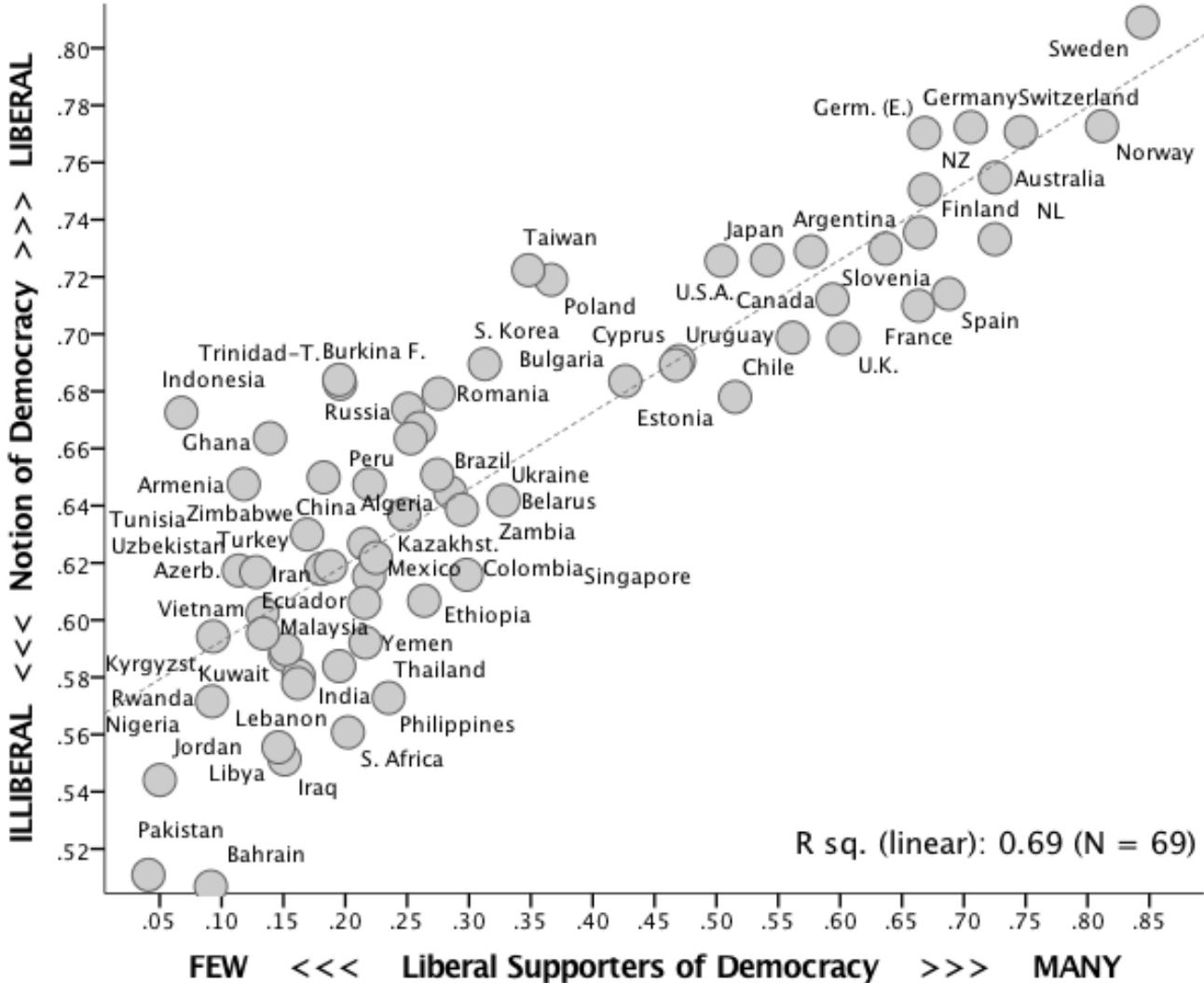
Note: Vertical axis measures liberal and illiberal support for democracy (as explained in endnote 22): illiberal supporters support democracy and emphasize illiberal sexual values; liberal supporters support democracy and emphasize liberal sexual values. Data source is EVS/WVS rounds 3 and 6, pooling samples from Argentina, Germany, Japan, South Korea, Spain, Sweden, the US, weighting each sample to an equal  $N$  of 1,000 per round (pooled  $N \approx 14,000$ ).

Figure 2. The Changing Moral Composition of Supporters of Democracy



Note: Vertical axis measures liberal and illiberal support for democracy (as explained in endnote 22): illiberal supporters support democracy and emphasize illiberal sexual values; liberal supporters support democracy and emphasize liberal sexual values. Data source is EVS/WVS rounds 3 and 6, pooling samples from Argentina, Germany, Japan, South Korea, Spain, Sweden, the US, weighting each sample to an equal N of 1,000 per round (pooled N ≈ 14,000).

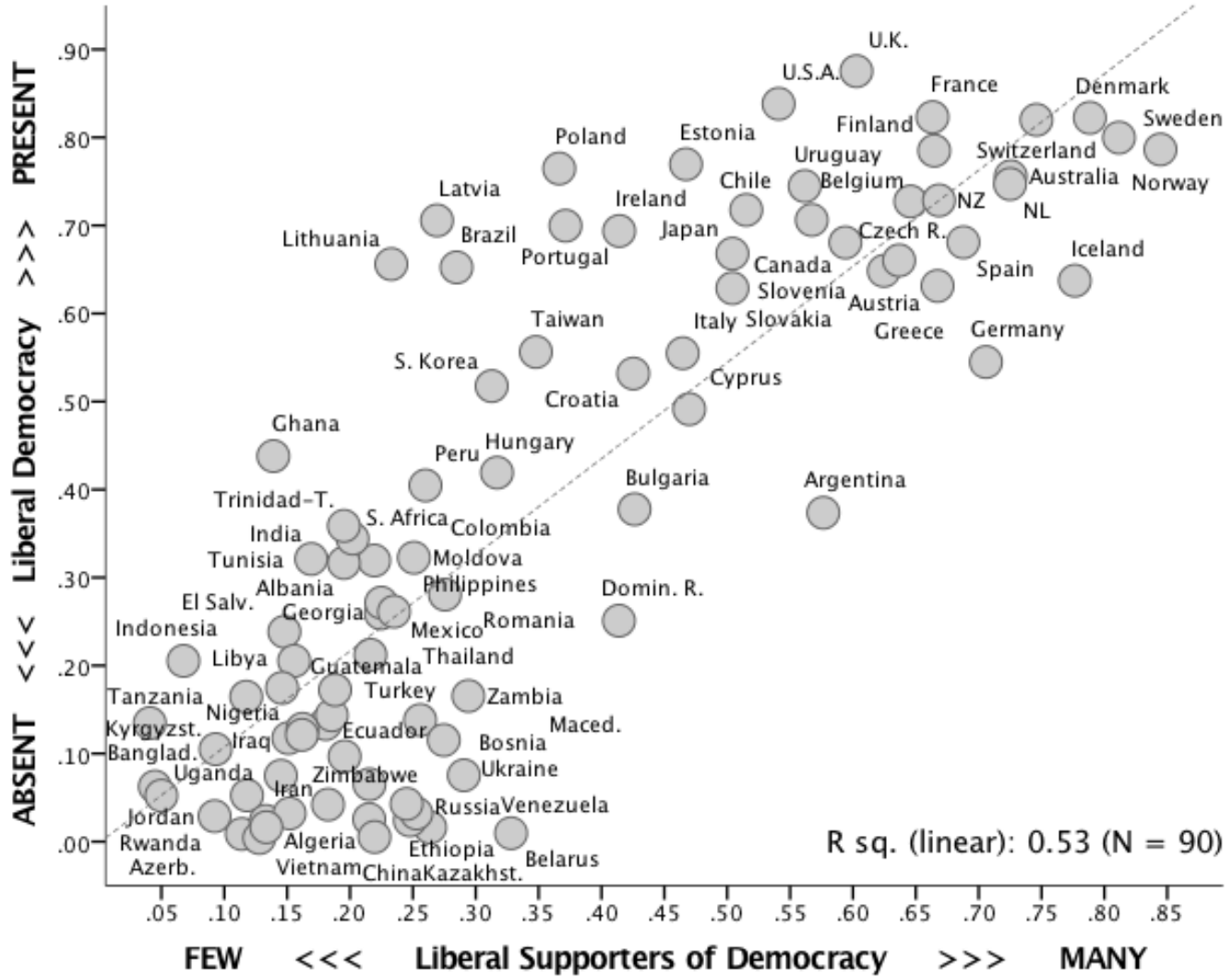
Figure 3. The Link of Liberal Support for Democracy with Notions and the Quality of Democracy



Note: Horizontal axis measures proportions of liberal supporters of democracy (as defined in endnote 22) for every country surveyed at least once by the EVS/WVS, using the data from the latest survey. Notions of democracy on the vertical axis of the left-hand diagram are measured as explained in endnote 25, using the latest available survey. Liberal democracy on the vertical axis of the right-hand diagram is the V-Dem measure of liberal democracy from the latest year at the time of this writing (i.e. 2012).



Figure 3. The Link of Liberal Support for Democracy with Notions and the Quality of Democracy



Note: Horizontal axis measures proportions of liberal supporters of democracy (as defined in endnote 22) for every country surveyed at least once by the EVS/WVS, using the data from the latest survey. Notions of democracy on the vertical axis of the left-hand diagram are measured as explained in endnote 25, using the latest available survey. Liberal democracy on the vertical axis of the right-hand diagram is the V-Dem measure of liberal democracy from the latest year at the time of this writing (i.e. 2012).

Figure 4. A Typology of the Cleavage Space in Mature Post-industrial Democracies

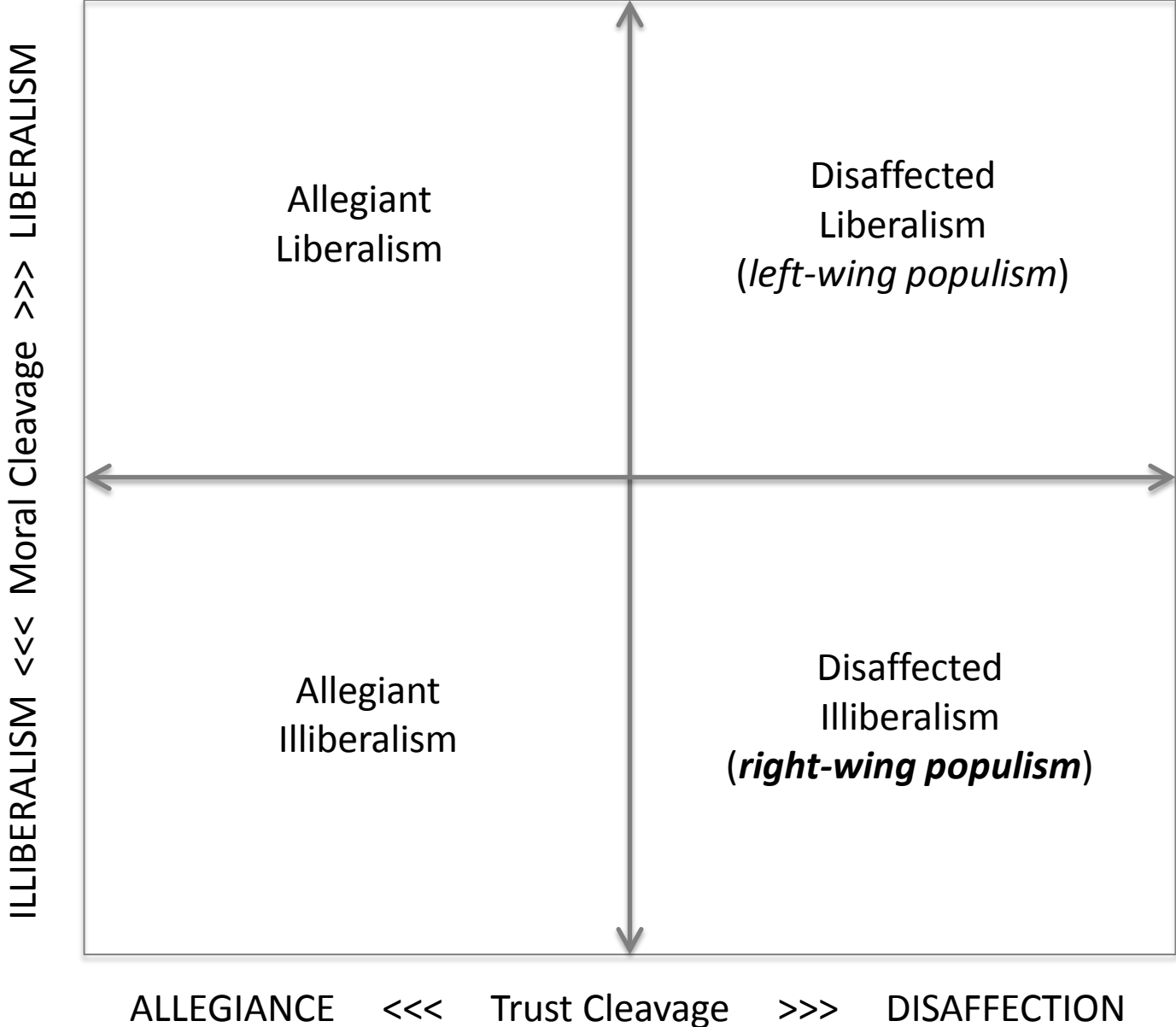
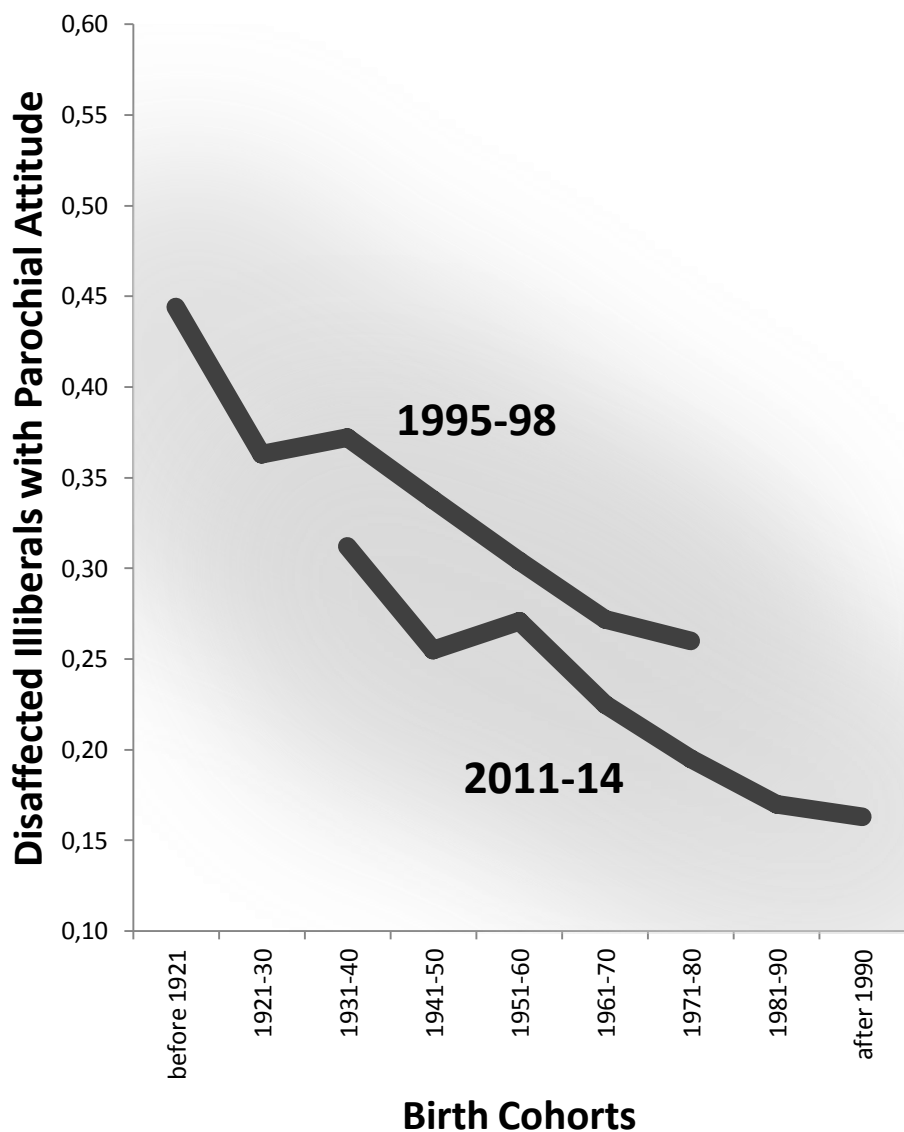
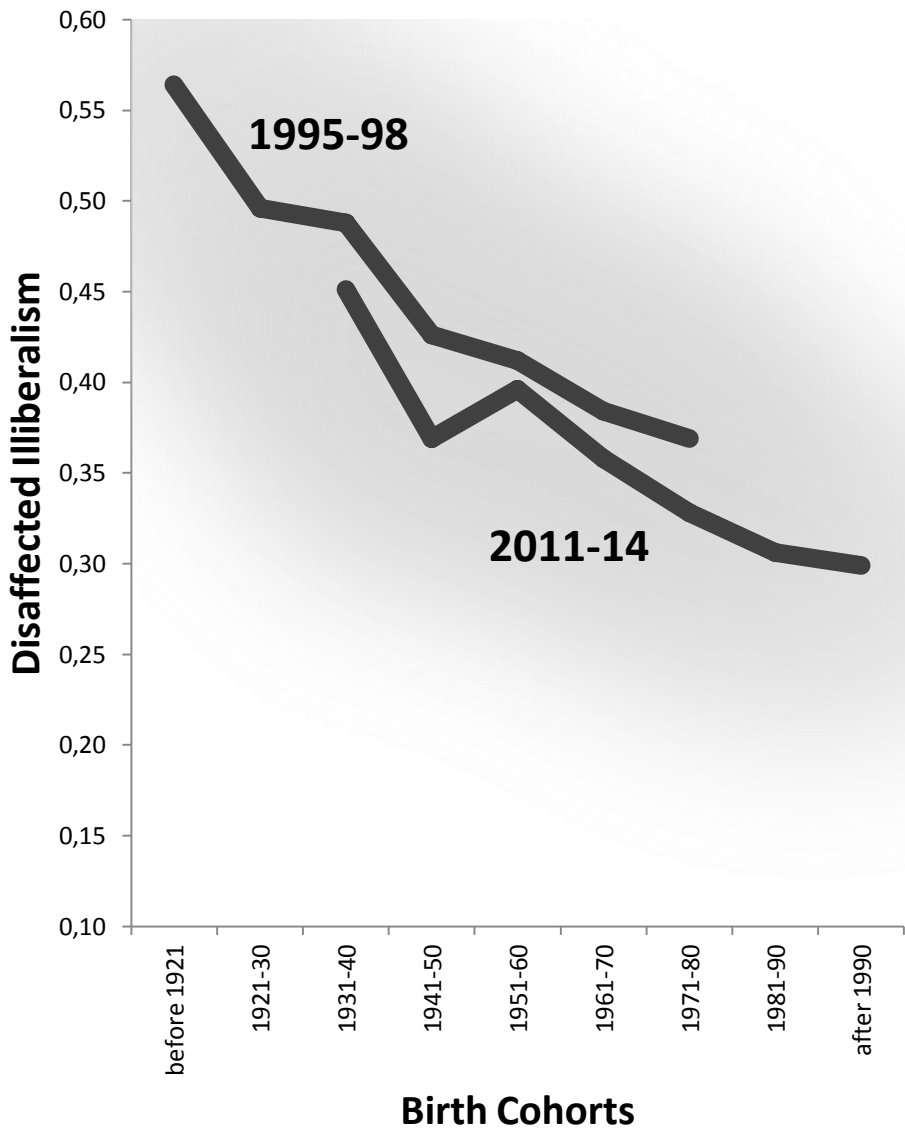


Figure 5. The Shrinking Support Base of Right-wing Populism



Note: Vertical axis in the left-hand diagram measures disaffected illiberalism as explained in endnote 43. Vertical axis on the right-hand diagram measures disaffected illiberals with a nationalist parochial attitude, as explained in endnote 45. Data source is EVS/WVS rounds 3 and 6, pooling samples from Argentina, Germany, Japan, South Korea, Spain, Sweden, the US, weighting each sample to an equal N of 1,000 per round (pooled N ≈ 14,000).

Figure 6. Growing Class Polarization in the Cleavage Space

