

Non-kin ties as a source of support in Europe: Unravelling the role of context

Nina Conkova
PhD Candidate

Supervisors: Prof. P. Dykstra & Dr. T. Fokkema

6th LCSR International Research Workshop

Introduction



- Support system – kin, non-kin, professionals; non-kin relatively understudied
- Existing knowledge on non-kin ties
- ✓ Individual level
 - Primarily practical and emotional support (Heady & Schweitzer, 2010; Litwak, 1985; Litwak & Szelenyi, 1969; Nocon & Pearson, 2000; Wenger, 2001)
 - In absence of family (support) (Barker, 2002; Cantor, 1979; Hank & Wagner, 2012; Kalwij, Pasini, & Wu, 2014; Lapierre & Keating, 2013; Wenger et al., 2007)
- ✓ Country level
 - Country differences in social (support) networks (Craveiro et al, 2013; Höllinger & Haller, 1990; Litwin & Stoeckel, 2013) and social capital (Pichler and Wallace, 2007)
- Country differences assumed to be due to varying degrees of welfare provision and cultural norms, but empirical work is scarce

Erasmus

Cross-country Comparative Research



- Cultural context
 - ✓ Focus on the family
 - ✓ In more familialistic countries people provide more to their parents in need (Haber Kern & Szydlik, 2010; Kalmijn & Saraceno, 2008).

- Welfare provision
 - ✓ Focus on social networks and family members
 - ✓ In more generous welfare states, more social contacts (Gelissen, van Oorschot, & Finsveen, 2012; Kääriäinen & Lehtonen, 2006; van Oorschot & Arts, 2005)
 - ✓ In more generous welfare states, specialization of social support (Brandt, 2013; Brandt et al., 2009; Deindl & Brandt, 2011)

Ezafun

Research Aim



- Drawing attention to non-kin support, we aim to examine the role of cultural and institutional context in shaping European's choices for a source of assistance

Erasmus

Conceptualizing Culture



- Culture rarely conceptualized in cross-country comparative research on social support
- More individualistic (Northern and Western) vs. more familialistic countries (Southern and Eastern)
 - ✓ Same vs linked?
- Linked
 - ✓ Individualism/collectivism: cultural dimension (broader system of basic deep-rooted values); explains differences between countries and underlie within country specific norms and attitudes in specific domains such as the family
 - ✓ Familialism: norms of family obligations, limited to family life
 - ✓ Values vs. norms
- Generalized trust: cultural value people learn early in life (Uslaner, 2002)

Ezra

Links between Cultural Context and Non-kin Support (1)



- **Generalized trust**

Hypothesis 1: In countries with higher levels of generalized trust people will select non-kin over kin more frequently than in countries with lower levels of generalised trust

Erasmus

Links between Cultural Context and Non-kin Support (2)



- **Individualism/collectivism**

Hypothesis 2 & 3: In more collectivistic countries people will select non-kin over kin and professionals more frequently than in more individualistic countries

Hypothesis 4: In more individualistic countries people will select non-kin over kin more frequently than in more collectivistic countries

Erasmus

Links between Cultural Context and Non-kin Support (3)



- **Familialism**

Hypothesis 5: In more familialistic countries people will select non-kin over kin less frequently than in less familialistic countries

Erasmus

Links between Institutional Context and Non-kin Support



- **Social protection expenditure**

Hypothesis 6 & 7: In countries with more generous welfare provision people will select non-kin over professionals and kin less frequently than in countries with less generous welfare provision

Erasmus

Data

- EQLS wave 3 (2011-2012), 28 countries
- Dependent variables: ‘From whom would you get support in each of the following situations:
 - 1.if you needed help around the household when ill;
 - 2.if you needed help when looking for a job;
 - 3.if you needed advice about a serious personal or family matter; and
 - 4.if you needed to urgently raise [1/12 of annual national at-risk-of-poverty threshold] to face an emergency.

For each situation, choose the most important source of support.’

Response categories: kin, non-kin, professionals and nobody

Data

- Independent variables: Country-level
 - ✓ Individualism scale (Hofstede, 2011) (0-100)
 - ✓ Norms of family obligations (EVS, 2008) (1-2)
 - ✓ Generalized trust (EQLS, 2012) (0-10)
 - ✓ Social protection expenditure as a % of GDP (Eurostat, 2015) (15.1%-34.3%)
 - ✓ GDP (Eurostat, 2015)
- Individual-level controls
 - ✓ socio-economic and demographic background, living arrangements, frequency of contact, relationship closeness and individual level generalized trust

Model: Multilevel Multinomial random intercept (x4)

- Level 1: 3 parts
 - ✓ Sampling model: multinomial probability distribution
 - ✓ Link function: logit

$$\eta_{mij} = \log \left(\frac{\phi_{mij}}{\phi_{Mij}} \right), \text{ where } \phi_{Mij} = 1 - \sum_{m=1}^{M-1} \phi_{mij}$$
 - ✓ Structural model

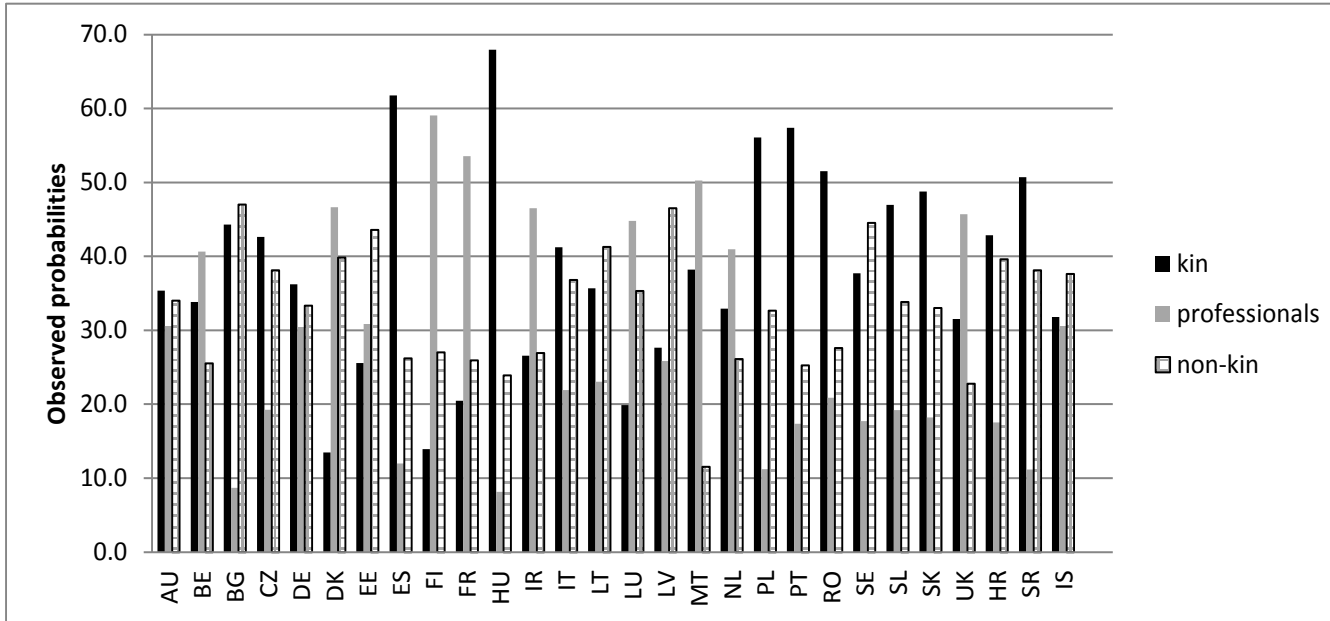
$$\eta_{mij} = \beta_{0j(m)} + \sum \beta_{qj(m)} X_{qij}$$

ϵ_{ij} is not separately estimated, $=\pi^2/3$
- Level 2

$$\beta_{0j(m)} = \gamma_{00(m)} + \sum \gamma_{s(m)} W_j + u_{0j(m)}$$

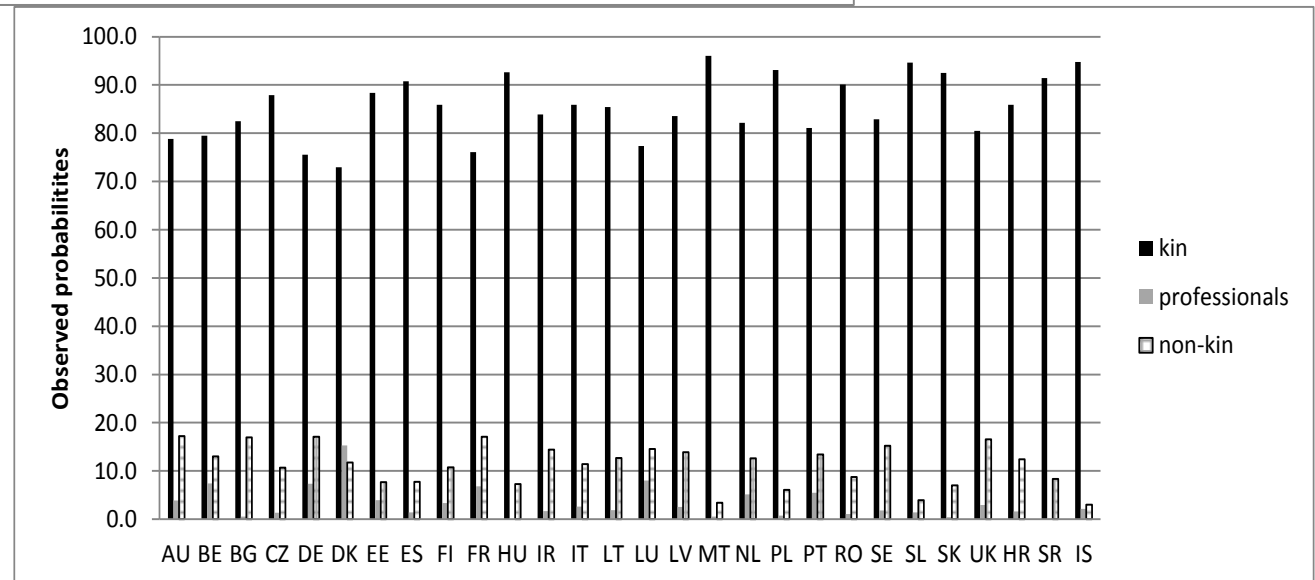
Results

Non-kin as a Source of Support



Help when looking for a job

Household chores when ill



	Help with household chores when ill		Advice	Financial help	Help with looking for a job
	Odds Ratio (CI)	Odds Ratio (CI)	Odds Ratio (CI)	Odds Ratio (CI)	
Category 1: Kin (reference category: non-kin)					
Fixed Effects					
Intercept	16.618*** (13.339,20.704)	4.012*** (3.380,4.762)	4.650*** (3.735,5.790)	0.875 (0.720,1.064)	
Individualism/Collectivism (H2,4)	1.003 (0.994, 1.013)	1.006 (0.998,1.015)	1.017** (1.066,1.028)	1.006 (0.997,1.016)	
Familialism (H5)	0.275† (0.066, 1.140)	0.389 (0.111,1.365)	0.066** (0.013,0.346)	0.119** (0.028,0.517)	
Generalized Trust (H1)	1.444** (1.114, 1.870)	1.058 (0.842,1.329)	1.478* (1.093,1.999)	0.929 (0.709,1.214)	
Social Protection Expenditure (H7)	0.943*** (0.913, 0.974)	0.953** (0.926,0.980)	0.994 (0.968,1.032)	1.012 (0.978,1.046)	
GDP (logged)	0.513** (0.313,0.839)	0.679† (0.438,1.052)	1.074 (0.598,1.926)	0.615† (0.364,1.040)	
Random Effects					
Intercept	0.103*** (0.321)	0.084*** (0.290)	0.146*** (0.382)	0.116*** (0.340)	
ICC (in %)	7.559	4.685	8.758	7.131	
Pseudo R² (in %)	61.7	48.1	53.8	54.1	

	Help with household chores when ill	Advice	Financial help	Help with looking for a job
Category: Professionals				
(reference category: non-kin)				
Fixed Effects	Odds Ratio (CI)	Odds Ratio (CI)	Odds Ratio (CI)	Odds Ratio (CI)
Intercept	0.286*** (0.186,0.441)	0.157*** (0.111,0.229)	0.637* (0.444,0.912)	0.675* (0.515,0.884)
Individualism/Collectivism (H3)	0.993 (0.977, 1.010)	1.014† (0.99,1.030)	1.032** (1.012,1.052)	1.013 (0.997,1.029)
Familialism	5.966 (0.463,76.946)	0.503 (0.050,5.097)	0.203 (0.011,3.831)	0.587 (0.055,6.295)
Generalized Trust	1.276 (0.809,2.014)	1.713* (1.133,2.589)	2.068* (1.213,3.523)	1.268 (0.823,1.952)
Social Protection Expenditure (H6)	1.046 (0.988,1.107)	1.009 (0.957,1.063)	1.009 (0.944,1.079)	1.018 (0.964,1.074)
GDP (logged)	2.325* (1.003,5.387)	0.840 (0.380,1.858)	1.992 (0.718,5.525)	1.484 (0.649,3.397)
Random Effects				
Intercept	0.296*** (0.544)	0.256*** (0.506)	0.468*** (0.684)	0.314*** (0.560)
ICC (in %)	16.104	13.632	28.992	12.902
Pseudo R2 (in %)	53.1	50.7	65.2	35.6

	Help with household chores when ill	Advice	Financial help	Help with looking for a job
Category 1: Kin				
(reference category: non-kin)				
Fixed Effects	Odds Ratio (CI)	Odds Ratio (CI)	Odds Ratio (CI)	Odds Ratio (CI)
Intercept	16.618*** (13.339,20.704)	4.012*** (3.380,4.762)	4.650*** (3.735,5.790)	0.875 (0.720,1.064)
Individualism/Collectivism (H2,4)	1.003 (0.994, 1.013)	1.006 (0.998,1.015)	1.017** (1.066,1.028)	1.006 (0.997,1.016)
Familialism (H5)	0.275† (0.066, 1.140)	0.389 (0.111,1.365)	0.066** (0.013,0.346)	0.119** (0.028,0.517)
Generalized Trust (H1)	1.444** (1.114, 1.870)	1.058 (0.842,1.329)	1.478* (1.093,1.999)	0.929 (0.709,1.214)
Social Protection Expenditure (H7)	0.943*** (0.913, 0.974)	0.953** (0.926,0.980)	0.994 (0.968,1.032)	1.012 (0.978,1.046)
GDP (logged)	0.513** (0.313,0.839)	0.679† (0.438,1.052)	1.074 (0.598,1.926)	0.615† (0.364,1.040)
Random Effects				
Intercept	0.103*** (0.321)	0.084*** (0.290)	0.146*** (0.382)	0.116*** (0.340)
ICC (in %)	7.559	4.685	8.758	7.131
Pseudo R² (in %)	61.7	48.1	53.8	54.1

	Help with household chores when ill	Advice	Financial help	Help with looking for a job
Category: Professionals				
(reference category: non-kin)				
Fixed Effects	Odds Ratio (CI)	Odds Ratio (CI)	Odds Ratio (CI)	Odds Ratio (CI)
Intercept	0.286*** (0.186,0.441)	0.157*** (0.111,0.229)	0.637* (0.444,0.912)	0.675* (0.515,0.884)
Individualism/Collectivism (H3)	0.993 (0.977, 1.010)	1.014† (0.99,1.030)	1.032** (1.012,1.052)	1.013 (0.997,1.029)
Familialism	5.966 (0.463,76.946)	0.503 (0.050,5.097)	0.203 (0.011,3.831)	0.587 (0.055,6.295)
Generalized Trust	1.276 (0.809,2.014)	1.713* (1.133,2.589)	2.068* (1.213,3.523)	1.268 (0.823,1.952)
Social Protection Expenditure (H6)	1.046 (0.988,1.107)	1.009 (0.957,1.063)	1.009 (0.944,1.079)	1.018 (0.964,1.074)
GDP (logged)	2.325* (1.003,5.387)	0.840 (0.380,1.858)	1.992 (0.718,5.525)	1.484 (0.649,3.397)
Random Effects				
Intercept	0.296*** (0.544)	0.256*** (0.506)	0.468*** (0.684)	0.314*** (0.560)
ICC (in %)	16.104	13.632	28.992	12.902
Pseudo R2 (in %)	53.1	50.7	65.2	35.6

	Help with household chores when ill	Advice	Financial help	Help with looking for a job
Category 1: Kin				
(reference category: non-kin)				
Fixed Effects	Odds Ratio (CI)	Odds Ratio (CI)	Odds Ratio (CI)	Odds Ratio (CI)
Intercept	16.618*** (13.339,20.704)	4.012*** (3.380,4.762)	4.650*** (3.735,5.790)	0.875 (0.720,1.064)
Individualism/Collectivism (H2,4)	1.003 (0.994, 1.013)	1.006 (0.998,1.015)	1.017** (1.066,1.028)	1.006 (0.997,1.016)
Familialism (H5)	0.275† (0.066, 1.140)	0.389 (0.111,1.365)	0.066** (0.013,0.346)	0.119** (0.028,0.517)
Generalized Trust (H1)	1.444** (1.114, 1.870)	1.058 (0.842,1.329)	1.478* (1.093,1.999)	0.929 (0.709,1.214)
Social Protection Expenditure (H7)	0.943*** (0.913, 0.974)	0.953** (0.926,0.980)	0.994 (0.968,1.032)	1.012 (0.978,1.046)
GDP (logged)	0.513** (0.313,0.839)	0.679† (0.438,1.052)	1.074 (0.598,1.926)	0.615† (0.364,1.040)
Random Effects				
Intercept	0.103*** (0.321)	0.084*** (0.290)	0.146*** (0.382)	0.116*** (0.340)
ICC (in %)	7.559	4.685	8.758	7.131
Pseudo R² (in %)	61.7	48.1	53.8	54.1

	Help with household chores when ill	Advice	Financial help	Help with looking for a job
Category: Professionals				
(reference category: non-kin)				
Fixed Effects	Odds Ratio (CI)	Odds Ratio (CI)	Odds Ratio (CI)	Odds Ratio (CI)
Intercept	0.286*** (0.186,0.441)	0.157*** (0.111,0.229)	0.637* (0.444,0.912)	0.675* (0.515,0.884)
Individualism/Collectivism (H3)	0.993 (0.977, 1.010)	1.014† (0.99,1.030)	1.032** (1.012,1.052)	1.013 (0.997,1.029)
Familialism	5.966 (0.463,76.946)	0.503 (0.050,5.097)	0.203 (0.011,3.831)	0.587 (0.055,6.295)
Generalized Trust	1.276 (0.809,2.014)	1.713* (1.133,2.589)	2.068* (1.213,3.523)	1.268 (0.823,1.952)
Social Protection Expenditure (H6)	1.046 (0.988,1.107)	1.009 (0.957,1.063)	1.009 (0.944,1.079)	1.018 (0.964,1.074)
GDP (logged)	2.325* (1.003,5.387)	0.840 (0.380,1.858)	1.992 (0.718,5.525)	1.484 (0.649,3.397)
Random Effects				
Intercept	0.296*** (0.544)	0.256*** (0.506)	0.468*** (0.684)	0.314*** (0.560)
ICC (in %)	16.104	13.632	28.992	12.902
Pseudo R2 (in %)	53.1	50.7	65.2	35.6

	Help with household chores when ill	Advice	Financial help	Help with looking for a job
Category 1: Kin				
(reference category: non-kin)				
Fixed Effects	Odds Ratio (CI)	Odds Ratio (CI)	Odds Ratio (CI)	Odds Ratio (CI)
Intercept	16.618*** (13.339,20.704)	4.012*** (3.380,4.762)	4.650*** (3.735,5.790)	0.875 (0.720,1.064)
Individualism/Collectivism (H2,4)	1.003 (0.994, 1.013)	1.006 (0.998,1.015)	1.017** (1.066,1.028)	1.006 (0.997,1.016)
Familialism (H5)	0.275† (0.066, 1.140)	0.389 (0.111,1.365)	0.066** (0.013,0.346)	0.119** (0.028,0.517)
Generalized Trust (H1)	1.444** (1.114, 1.870)	1.058 (0.842,1.329)	1.478* (1.093,1.999)	0.929 (0.709,1.214)
Social Protection Expenditure (H7)	0.943*** (0.913, 0.974)	0.953** (0.926,0.980)	0.994 (0.968,1.032)	1.012 (0.978,1.046)
GDP (logged)	0.513** (0.313,0.839)	0.679† (0.438,1.052)	1.074 (0.598,1.926)	0.615† (0.364,1.040)
Random Effects				
Intercept	0.103*** (0.321)	0.084*** (0.290)	0.146*** (0.382)	0.116*** (0.340)
ICC (in %)	7.559	4.685	8.758	7.131
Pseudo R² (in %)	61.7	48.1	53.8	54.1

	Help with household chores when ill	Advice	Financial help	Help with looking for a job
Category: Professionals				
(reference category: non-kin)				
Fixed Effects	Odds Ratio (CI)	Odds Ratio (CI)	Odds Ratio (CI)	Odds Ratio (CI)
Intercept	0.286*** (0.186,0.441)	0.157*** (0.111,0.229)	0.637* (0.444,0.912)	0.675* (0.515,0.884)
Individualism/Collectivism (H3)	0.993 (0.977, 1.010)	1.014† (0.99,1.030)	1.032** (1.012,1.052)	1.013 (0.997,1.029)
Familialism	5.966 (0.463,76.946)	0.503 (0.050,5.097)	0.203 (0.011,3.831)	0.587 (0.055,6.295)
Generalized Trust	1.276 (0.809,2.014)	1.713* (1.133,2.589)	2.068* (1.213,3.523)	1.268 (0.823,1.952)
Social Protection Expenditure (H6)	1.046 (0.988,1.107)	1.009 (0.957,1.063)	1.009 (0.944,1.079)	1.018 (0.964,1.074)
GDP (logged)	2.325* (1.003,5.387)	0.840 (0.380,1.858)	1.992 (0.718,5.525)	1.484 (0.649,3.397)
Random Effects				
Intercept	0.296*** (0.544)	0.256*** (0.506)	0.468*** (0.684)	0.314*** (0.560)
ICC (in %)	16.104	13.632	28.992	12.902
Pseudo R2 (in %)	53.1	50.7	65.2	35.6

Discussion

- Cultural and institutional context does matter for one's choice of a source of support
- The association between social protection expenditure (SPE) and the preference for a source of support is smaller compared with that of culture
 - ✓ SPE seems to create a sense of solidarity that expands beyond the family
- Both values and norms matter
 - ✓ The impact of norms is stronger, suggesting the importance of the structural environment
 - ✓ Higher levels of collectivism rather than individualism are associated with a preference for non-kin help (individualistic values a better predictor of social network size and composition than sources of support?)
- In less trustful societies, people are more likely to turn to non-kin than to kin or professionals
 - ✓ Macro-micro vs. micro-macro relationship
 - ✓ Likely driven by CEE countries where it seems to be about weak(er) ties when in need rather than trust

Ezra

In the near future...



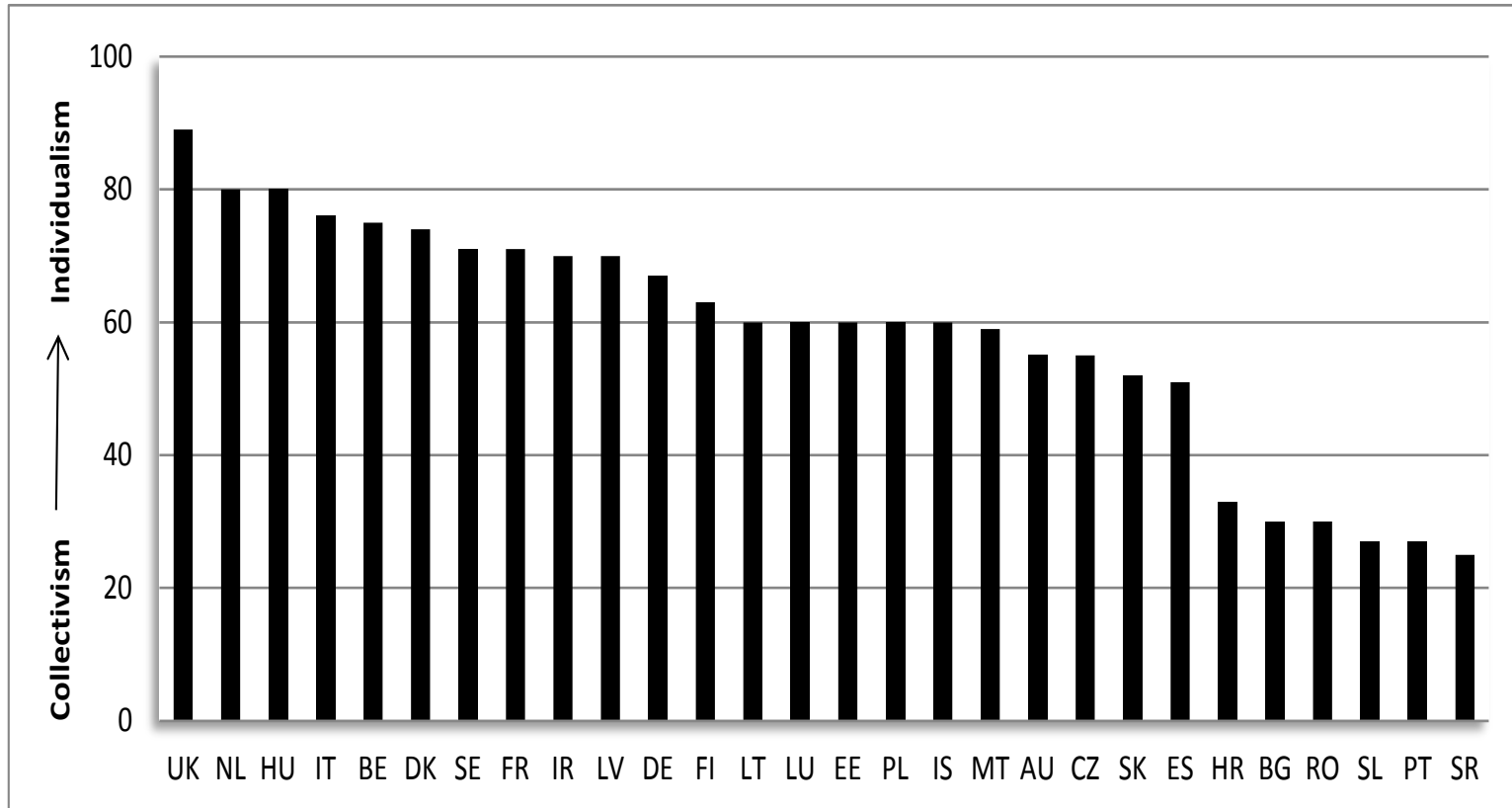
- To many comparisons?
 - ✓ Remove two types of support
- Multicollinearity and computational difficulties?
 - ✓ Split cultural and institutional context
- Trust: fitting the employed definition of cultural context?
 - ✓ Split cultural context and generalized trust
- Use LITS data to test hypotheses on trust in CEE

Thank you for your attention!

Ezra

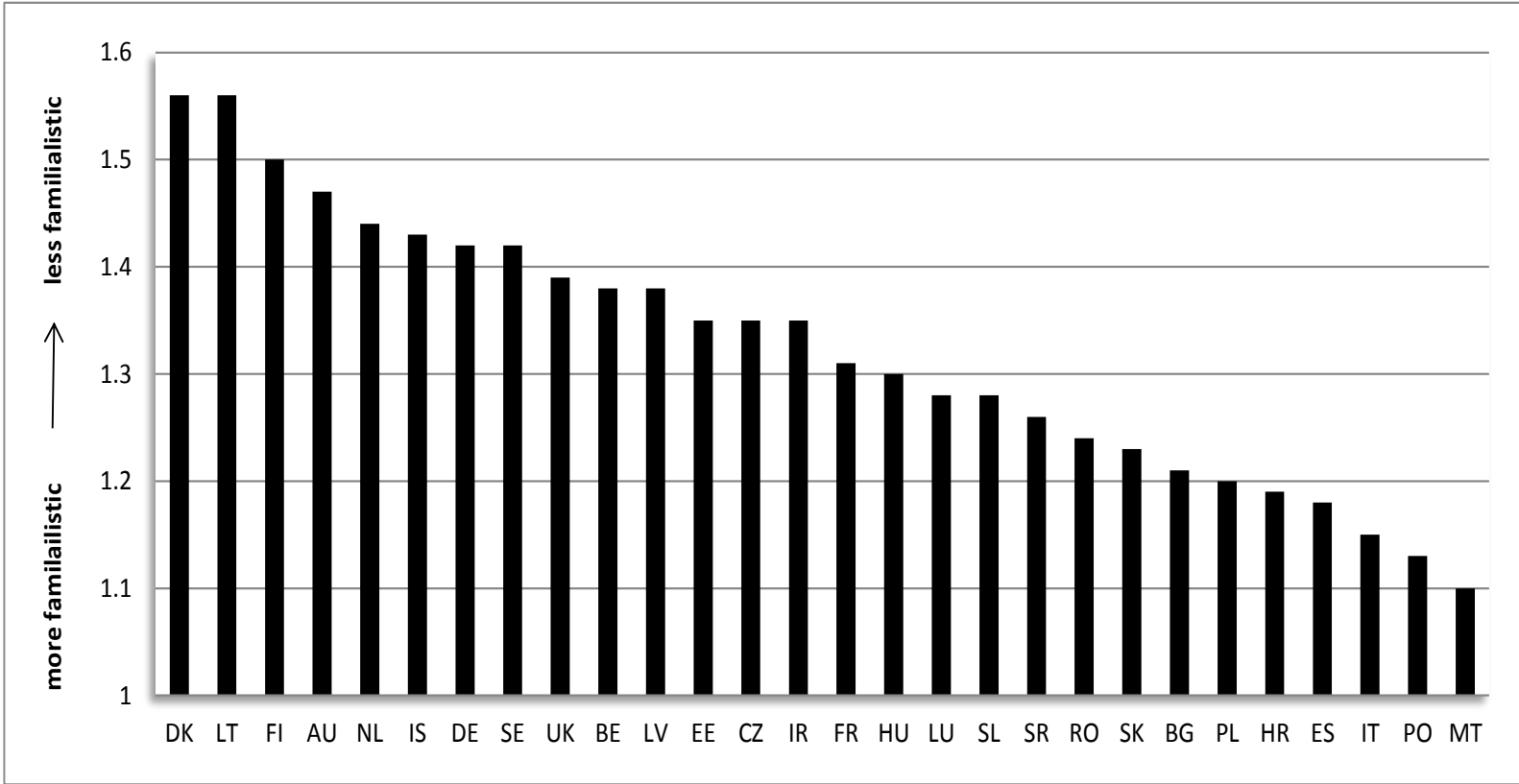
Country level variables

Individualism



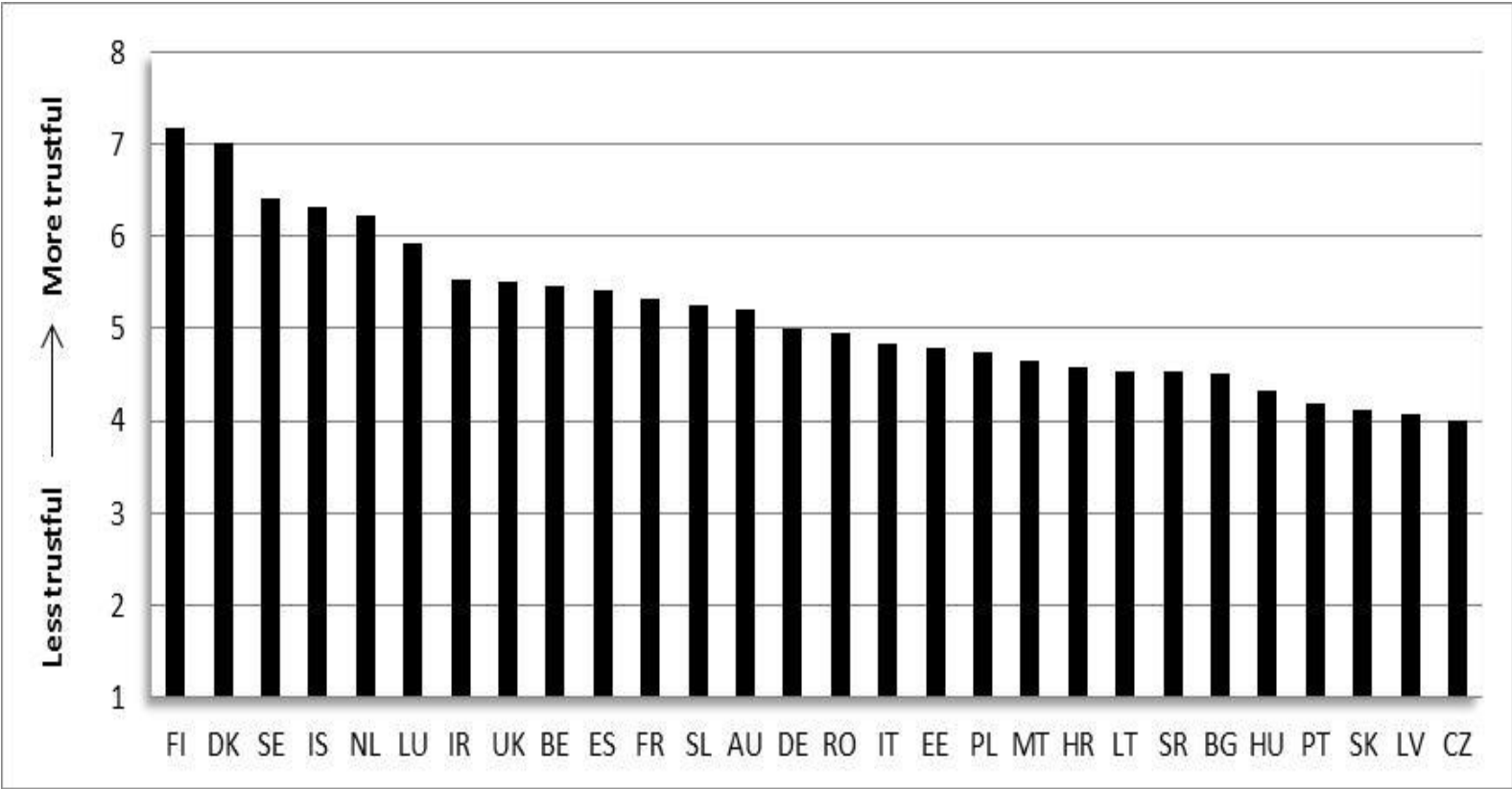
Country level variables

Familialism



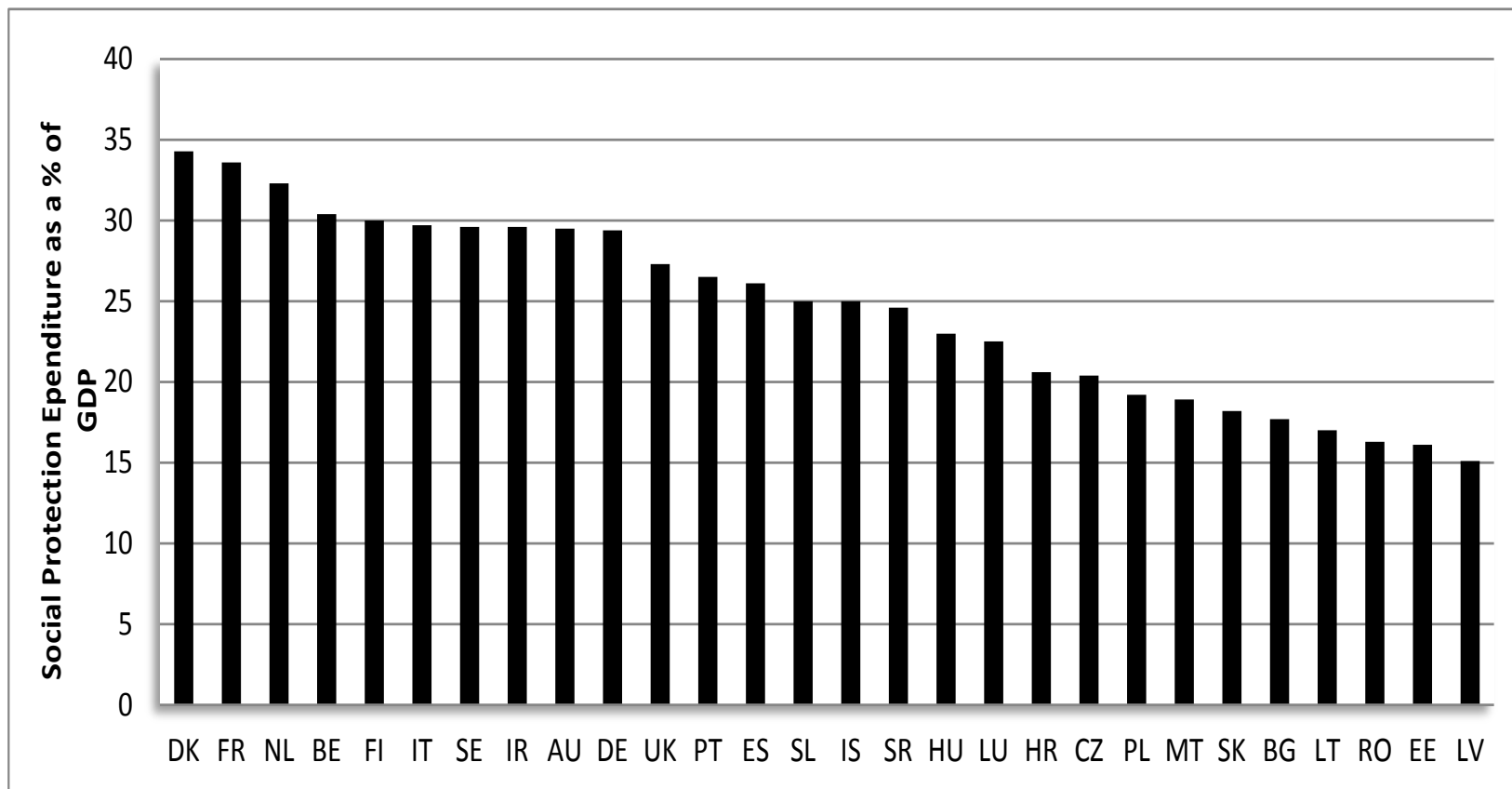
Country level variables

Generalized trust



Country level variables

Social protection



Correlation between level-2 independent variables

		1	2	3	4	5
1	Individualism/Collectivism	1	0.374	0.418	0.472	0.558
2	Generalised trust		1	0.660	0.550	0.650
3	Social protection expenditure as a percentage of GDP			1	0.348	0.617
4	Familialism				1	0.350
5	GDP (logged)					1

Descriptives

Variable	Observations	Mean/Proportion	SD	Range
Country-level characteristics				
Individualism/Collectivism	28	58.21	18.11	25-89
Familialism	28	1.32	0.13	1-2
Generalised trust	28	5.17	0.86	4.01-7.17
Social protection expenditure	28	24.57	5.81	15.1-34.3
GDP	28	24267	11254	8700-68100
Individual-level characteristics^a				
Individual generalised trust	36 295	5.15	2.46	1-10
Age	36 509	50.64	18.02	18-95
Male	36 509	0.57		0/1
Urban	36 444	0.52		0/1
Satisfaction with social life	36 021	7.20	2.18	1-10
Satisfaction with family life	36 061	7.96	2.11	1-10
Contact with relatives	35 637	9.62	8.15	0-25
Contact with non-kin	36 424	13.79	10.34	0-25
Living alone	36 509	0.23		0/1
Living with non-kin	36 200	0.01		0/1
Number of children	36 328	1.58	1.31	0-10
Married	36 308	0.60		0/1
Education	36 360	3.11	1.33	0-6

Multilevel results: L1 estimates

	Help with household chores when ill	Advice	Financial help	Help with looking for a job
Category 1: Kin (reference category: non-kin)				
Fixed Effects	Odds ratio (CI)	Odds ratio (CI)	Odds ratio (CI)	Odds ratio (CI)
Male	0.880*** (0.815,0.948)	0.916** (0.865,0.969)	1.471*** (1.371,1.579)	1.325*** (1.243,1.413)
Age	0.998† (0.995,1.000)	1.015*** (1.013,1.017)	1.007*** (1.004,1.009)	1.014*** (1.012,1.016)
Urban	0.921* (0.853,0.993)	0.892*** (0.842,0.945)	0.810*** (0.753,0.871)	0.861*** (0.806,0.920)
Living alone	0.346*** (0.307,0.390)	0.825*** (0.753,0.903)	0.685*** (0.609,0.771)	0.719*** (0.643,0.804)
Living with non-kin	0.262*** (0.207,0.333)	0.827† (0.662,1.035)	0.771† (0.586,1.015)	0.870 (0.675,1.121)
Contact with relatives	1.039*** (1.033,1.044)	1.024*** (1.021,1.028)	1.025*** (1.020,1.029)	1.017*** (1.013,1.021)
Contact with non-kin	0.980*** (0.977,0.984)	0.991*** (0.989,0.994)	0.994*** (0.991,0.998)	0.995** (0.992,0.999)
Individual trust	0.980* (0.964,0.996)	0.976*** (0.964,0.988)	0.993 (0.978,1.008)	0.988† (0.974,1.001)
Satisfaction with family life	1.191*** (1.167,1.215)	1.154*** (1.136,1.173)	1.132*** (1.110,1.154)	1.060*** (1.040,1.080)
Satisfaction with social life	0.966*** (0.946,0.986)	0.971*** (0.956,0.987)	0.975* (0.956,0.994)	1.001 (0.983,1.019)
Number of children	1.146*** (1.107,1.185)	1.060*** (1.033,1.088)	1.003 (0.970,1.037)	0.985 (0.955,1.016)
Married	1.023 (0.913,1.149)	1.415*** (1.307,1.531)	0.873* (0.787,0.968)	0.921† (0.842,1.007)
Education	0.906*** (0.879,0.933)	0.891*** (0.871,0.912)	0.986 (0.958,1.016)	0.814*** (0.792,0.836)



Multilevel results: L1 estimates

	Advice	Financial help	Help with looking for a job	Help with household chores when ill
Category 1: Professionals (reference category: non-kin)				
Fixed Effects	Odds ratio (CI)	Odds ratio (CI)	Odds ratio (CI)	Odds ratio (CI)
Male	0.834* (0.721,0.965)	0.853* (0.753,0.967)	1.125* (1.017,1.246)	1.247 (1.163,1.338)
Age	1.034*** (1.029,1.039)	1.020*** (1.016,1.024)	1.024*** (1.020,1.027)	1.008*** (1.005,1.010)
Urban	0.945 (0.815,1.094)	0.867* (0.763,0.986)	0.786*** (0.708,0.872)	0.971*** (0.903,1.044)
Living alone	0.639*** (0.491,0.824)	0.891† (0.719,1.104)	0.733*** (0.614,0.875)	0.772*** (0.685,0.870)
Living with non-kin	0.333** (0.151,0.734)	0.520 (0.251,1.077)	0.826 (0.530,1.289)	0.688* (0.516,0.918)
Contact with relatives	0.993 (0.982,1.004)	0.990* (0.981,0.999)	0.997 (0.990,1.004)	0.994** (0.989,0.998)
Contact with non-kin	0.969*** (0.962,0.976)	0.986*** (0.980,0.992)	0.992** (0.987,0.997)	0.997† (0.993,1.000)
Individual trust	0.971† (0.942, 1.002)	0.975 † (0.949,1.002)	0.957*** (0.936,0.978)	0.984* (0.968,0.999)
Satisfaction with family life	1.051* (1.011,1.093)	0.985 (0.952,1.019)	1.077*** (1.046,1.109)	1.043*** (1.021,1.064)
Satisfaction with social life	0.902*** (0.866,0.940)	0.896*** (0.866,0.928)	0.926*** (0.900,0.952)	0.933*** (0.915,0.952)
Number of children	0.980 (0.923,1.042)	1.090*** (1.036,1.146)	1.010 (0.966,1.055)	1.049** (1.015,1.084)
Married	0.890 (0.691, 1.146)	1.261* (1.041,1.527)	0.882 (0.754,1.032)	0.815*** (0.739,0.900)
Education	0.872*** (0.824,0.922)	0.931** (0.887,0.977)	0.954* (0.915,0.994)	0.958** (0.931,0.986)



This report was presented at the 6th LCSR International Workshop
“Trust, Social Capital and Values in a Comparative Perspective”,
which held within the XVII April International Academic Conference on Economic and Social Development.

April 18 – April 22, 2016 - Higher School of Economics, Moscow.

<https://lcsr.hse.ru/en/seminar2016>

Настоящий доклад был представлен на VI международном рабочем семинаре ЛССИ
«Доверие, социальный капитал и ценности в сравнительной перспективе»,
прошедшего в рамках XVII Апрельской международной научной конференции НИУ ВШЭ «Модернизация экономики и общества».

18 – 22 апреля, 2016 – НИУ ВШЭ, Москва.

<https://lcsr.hse.ru/seminar2016>