



IKG | Institut für interdisziplinäre
Konflikt- und Gewaltforschung

Alienation and Group-Focused Enmity in European Context

Ekaterina Lytkina (Laboratory for Comparative Social Research, National Research University Higher School of Economics, Russia)

Andreas Zick (Institute for Interdisciplinary Research on Conflict and Violence, Bielefeld University)

Contents

- Why is the research relevant?
- Theoretical foundations
- Methodology
- Results
- Conclusions and discussion

Why bother?

- social inequality
- increasing social cleavages
- exclusion
- individualism
- increasing migration flows, ethnic and cultural diversity



disintegration as
a key problem of
contemporary
societies



Endangered social cohesion

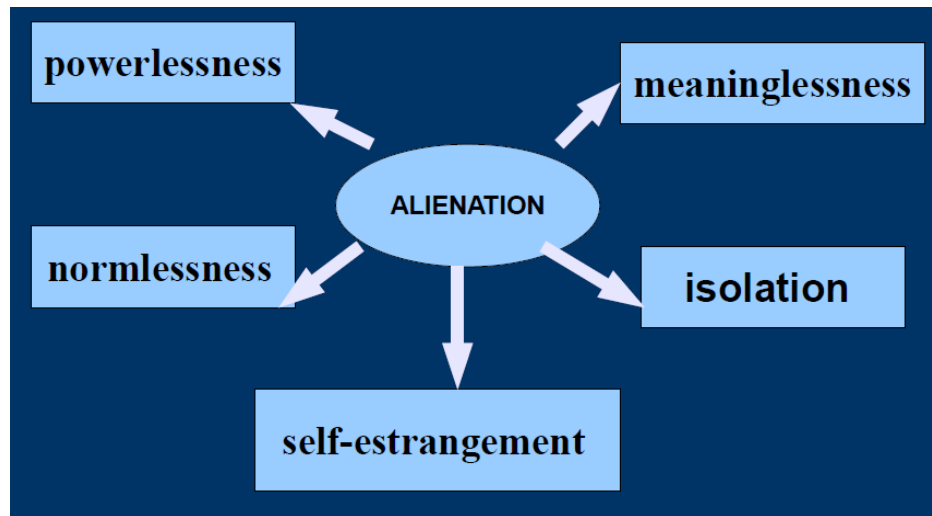


such attitudes may increase
fears concerning different
out-groups, which may be
blamed for the perceived
lack of integration in the
society

Dragolov et al. 2013 p. 4

Zick et al, 2011: 141

- “five basic ways in which the concept of alienation has been used [...to] make the traditional interest in alienation more amenable to sharp empirical statement” (Seeman, 1959, p. 783-784).



D
E
S
I
N
T
E
G
R
A
T
I
O
N

1) structural crisis (decreased ability to influence politics and the state)

powerlessness

scapegoats for such problems that people can't influence

2) regulation crisis, meaning pluralization and varnishing of norms and values

meaninglessness

complicate the society they have to deal with and endanger its already eroding values and norms" [Zick et al, 2011: 141]

3) crisis of cohesion (individualization, loss of ability of ideals, social relations, classes, etc. to connect people

isolation

universalism (Parsons), instrumental approach (institutional anomie theory, Messner & Rosenfeld 1997, 2013)

alienation

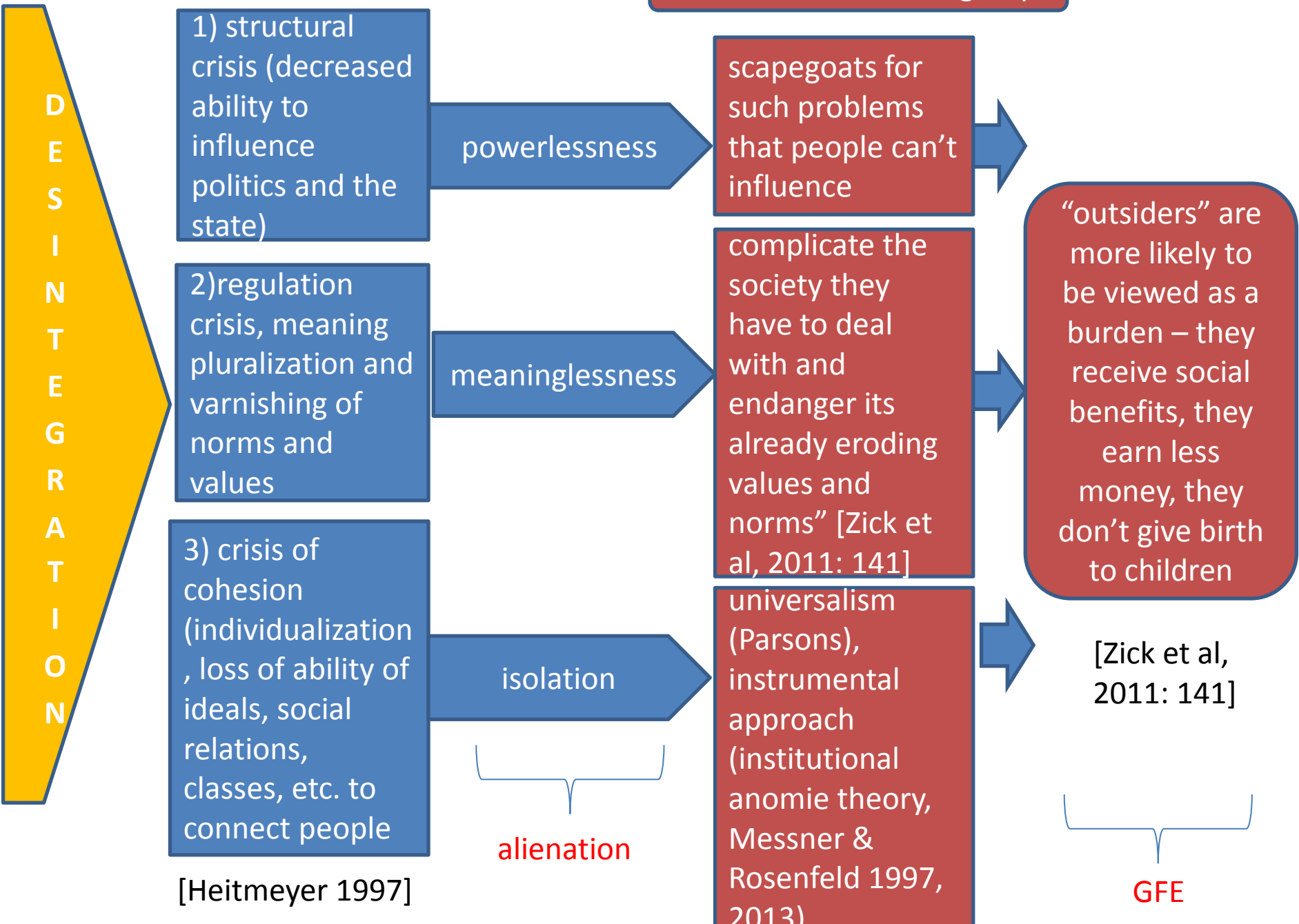
"outsiders" are more likely to be viewed as a burden – they receive social benefits, they earn less money, they don't give birth to children

[Zick et al, 2011: 141]

GFE

[Heitmeyer 1997]

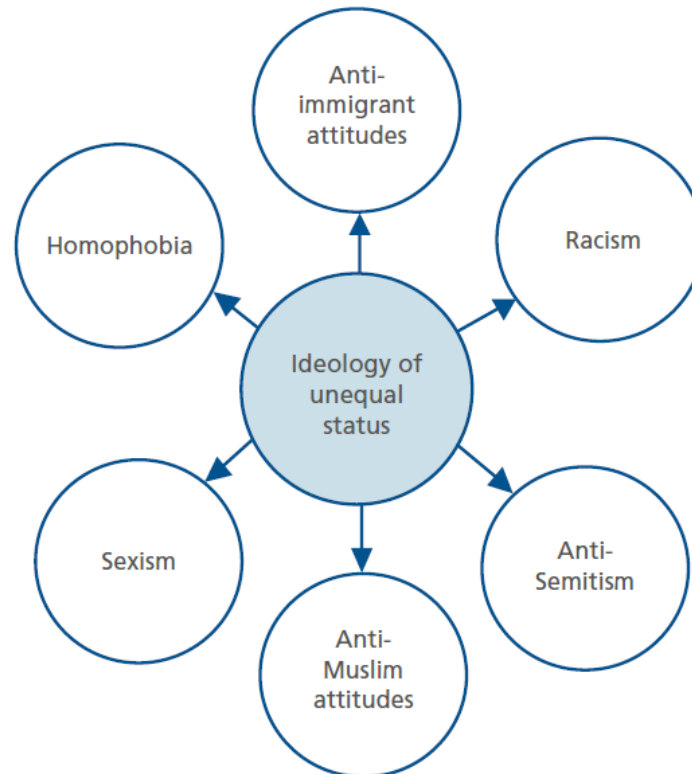
Attitudes towards outgroups



- **prejudice** – when “individuals are looked down upon not on the basis of their personal characteristics but through nothing other than their categorization as a member of an outgroup” [Zick et al, 2011: 27-28]
- **Wilhelm Heitmeyer (2002) - Group-Focused Enmity**
- applied by a number of researchers (Huepping 2006, Zick et al. 2008, Zick et al. 2011)
- encloses a **group of prejudice** towards different groups and this describes a **generalized devaluation of out-groups**. These groups are apprehended as “unequal in value by “reasons”, for example, of economic uselessness, lower levels of civilization, or abnormal sexual practices” (Zick et al. 2008: 364)

- Zick at al. propose **nine components** for the of group-focused enmity syndrome: **racism, sexism, xenophobia, anti-Semitism, Islamophobia, devaluation of homosexual, disabled, and homeless persons, as well as newcomers** (2008: 366)
- GFE Europe: **six components**

Figure 1: The syndrome of group-focused enmity in the European study



Data

- **“Group-Focused Enmity”**
- 2008/2009 by the Institute of Conflict and Violence Research, Bielefeld University
- **Eight European countries:** Great Britain, Germany, Italy, Hungary, Poland, Netherlands, Portugal, France
- In each country, about 500 respondents

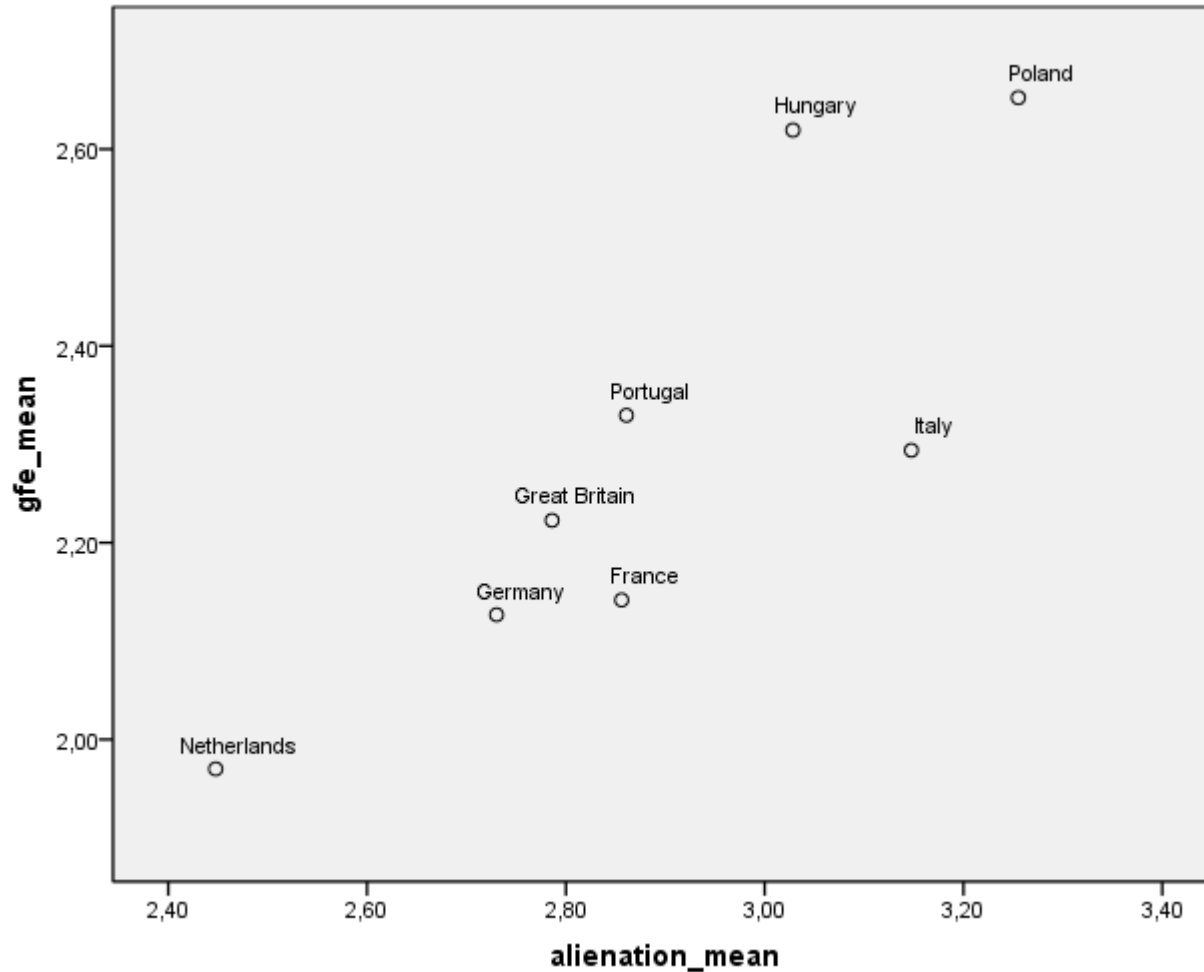
Alienation

	No.	Item	D	GB	F	NL	I	PT	PL	HU
powerlessness	6	Politicians do not care what people like me think.	66.6	64.2	71.0	34.6	76.5	80.5	87.3	82.4
	7	People like me do not have any say about what the government does.	64.6	64.4	59.7	39.3	81.1	33.5	80.4	50.2
meaninglessness	2	Nowadays things are so confusing that you sometimes do not know where you stand.	61.5	70.3	86.1	65.7	73.4	92.4	88.7	76.6
	3	Nowadays things are so complex that you sometimes do not know what is going on.	65.5	70.4	78.3	62.6	78.6	88.3	86.2	80.6
Social isolation	1	Finding real friends is becoming more and more difficult nowadays.	56.7	36.2	58.2	30.4	72.6	86.6	78.1	80.4
	2	Relationships are getting more and more unstable.	67.9	69.1	70.2	60.5	79.7	88.4	85.2	84.9

GFE

Concept	Indicators
Anti-immigrant statements	There are too many immigrants in [country].
	Because of the number of immigrants, I sometimes feel like a stranger in [country]
	When jobs are scarce, [country natives] should have more rights to a job than immigrants
	Immigrants enrich our culture (reversed coded).
Racist statements	There is a natural hierarchy between black and white people.
	Preferably blacks and whites should not get married.
Anti-Semitic statements	Jews have too much influence in [country].
	Jews try to take advantage of having been victims during the Nazi era.
	Jews in general do not care about anything or anyone but their own kind
	Jews enrich our culture (reversed coded)
Anti-Muslim statements	There are too many Muslims in [country].
	Muslims are too demanding.
	Islam is a religion of intolerance.
Sexism	Women should take their role as wives and mothers more seriously.
	When jobs are scarce, men should have more rights to a job than women.
Homophobia statements	It is a good thing to allow marriages between two men or two women (reversed coded).
	There is nothing immoral about homosexuality (reversed coded).

Group-Focused Enmity Index and Alienation Index



Research Question

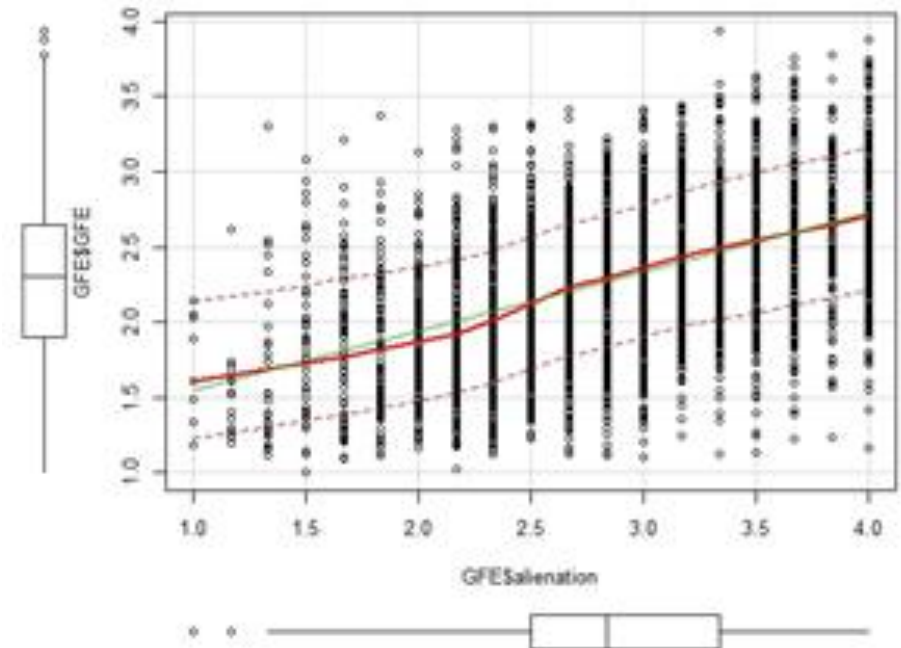
- Can alienation predict Group-Focused Enmity in European countries?
- Will the effect be different in different countries?
- Main hypothesis: The more alienated individuals are in a country, the less effect alienation should produce on group-focused enmity

(diversity of countries: post-Communist, “old Europe”, Europe „of a lower speed“)

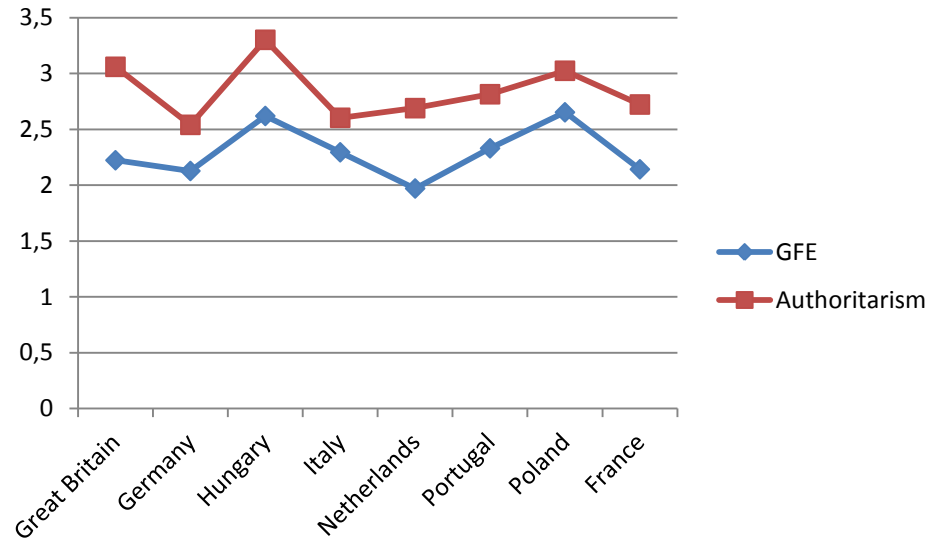
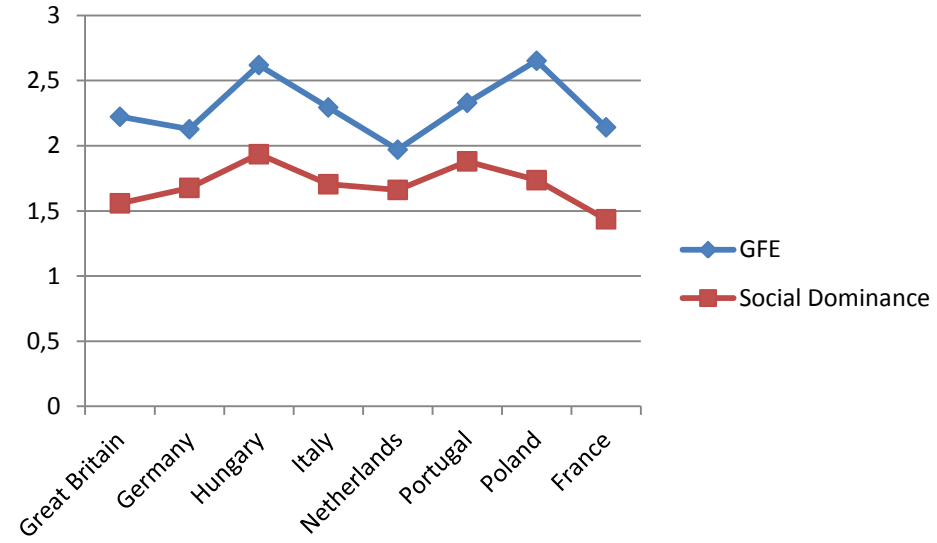
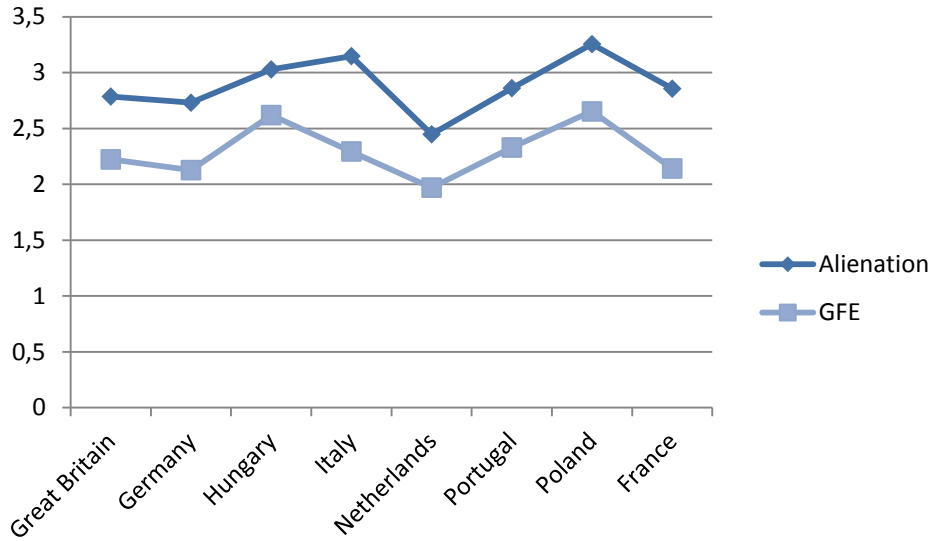
GFE and Alienation Indices Correlations



Alienation & GFE



Predictors of GFE



	ANCOVA, Restricted	ANCOVA, Full	Restricted with predictors	Full with predictors
intercept	1.29849*** (.038)	0.95060*** (.087)	1.2118840*** (.056)	0.8924744*** (.094)
alienation	0.33276*** (.012)	0.45811*** (.031)	0.3028668*** (.012)	0.4235209*** (.030)
Germany	-0.07740** (.027)	0.13107ns (.119)	-0.0841429** (.027)	0.0403440ns (.116)
Hungary	0.31869*** (.029)	0.94870*** (.134)	0.3260716*** (.029)	0.9389629*** (.130)
Italy	-0.04384ns (.028)	0.28469* (.135)	-0.0590641* (.028)	0.2959569* (.131)
Netherlands	-0.14395*** (.027)	0.07822ns (.118)	-0.1686957*** (.027)	0.0224750ns (.112)
Portugal	0.08314** (.08314)	0.75757*** (.168)	0.0805093* (.029)	0.8360731*** (.164)
Poland	0.27308*** (.029)	0.77780*** (.151)	0.2253108*** (.029)	0.7651089*** (.145)
France	-0.10708*** (.02768)	0.43306*** (.120)	-0.0649110* (.027)	0.4475677*** (.116)
gender			0.0654037*** (.013)	0.0629812*** (.014)
Income+			0.0083123ns	0.0006383ns
Income-			0.0385154ns	0.0315371ns
Income --			0.0580019ns	0.0548122ns
Religious			-0.0708810** (.025)	-0.0742894** (.025)
Neutr_relig			-0.1494600*** (.027)	-0.1520751*** (.027)
Non relig.			-0.272536*** (.028)	-0.2788749*** (.028)
Age			0.0053809*** (.0004)	0.0053326*** (.0004)
R2 Adj	0.3281	0.3346	0.3974	0.4053

	ANCOVA, Restricted	ANCOVA, Full	Restricted with predictors	Full with predictors
Germany		-0.07412 ns (.042)		-0.0438283ns (.041)
Hungary		-0.21964*** (.045)		-0.2139841*** (.042)
Italy		-0.11915** (.044)		-0.1277131** (.043)
Netherlan ds		-0.07396ns (.044)		-0.0625326ns (.043)
Portugal		-0.23964*** (.059)		-0.2686933*** (.057)
Poland		-0.17351*** (.049)		-0.1843706*** (.047)
France		-0.19267*** (.042)		0.1830479*** (.040)
R2 Adj	0.3281	0.3346	0.3974	0.4053

Great Britain serves as a reference country
 signif. codes: *** < 0.001, ** < 0.01, * < 0.05

Alternative explanations: GFE ~ country + gender + economy+ religiosity+ age+ soc.dominance + authoritarianism

	Estimate	Std. Error	t value	Pr(> t)	
(Intercept)	0.6898435	0.0510968	13.501	< 2e-16	***
countryGermany	0.0241035	0.0239939	1.005	0.315174	
countryHungary	0.2314200	0.0256504	9.022	< 2e-16	***
countryItaly	0.1460990	0.0247424	5.905	3.86e-09	***
countryNetherlands	-0.1762788	0.0233528	-7.548	5.56e-14	***
countryPortugal	0.0929307	0.0251108	3.701	0.000218	***
countryPoland	0.3441031	0.0247594	13.898	< 2e-16	***
countryFrance	0.0786030	0.0236255	3.327	0.000887	***
gender	0.0319162	0.0121426	2.628	0.008614	**
es02w1quite good	0.0480437	0.0282264	1.702	0.088827	.
es02w1quite bad	0.1001866	0.0301884	3.319	0.000913	***
es02w1very bad	0.1509834	0.0356816	4.231	2.38e-05	***
re02w1quite religious	-0.0951187	0.0216779	-4.388	1.18e-05	***
re02w1somewhat non-religious	-0.1553184	0.0236322	-6.572	5.68e-11	***
re02w1not at all religious	-0.2164514	0.0240434	-9.003	< 2e-16	***
AGEW1R	0.0055058	0.0003648	15.093	< 2e-16	***
domina	0.2793428	0.0119575	23.361	< 2e-16	***
author	0.2891436	0.0092773	31.167	< 2e-16	***

Adj. R2 = 0.5359

Coefficients:

	Estimate	Std. Error	t value	Pr(> t)	
(Intercept)	0.3016311	0.0820099	3.678	0.000239	***
alienation	0.2289582	0.0262819	8.712	< 2e-16	***
countryGermany	0.0569262	0.0990308	0.575	0.565441	
countryHungary	0.5709947	0.1117189	5.111	3.38e-07	***
countryItaly	0.1665731	0.1121660	1.485	0.137618	
countryNetherlands	-0.0690944	0.0975503	-0.708	0.478809	
countryPortugal	0.4070022	0.1408223	2.890	0.003874	**
countryPoland	0.4571389	0.1253777	3.646	0.000270	***
countryFrance	0.3092996	0.0988435	3.129	0.001767	**
gender	0.0489686	0.0117727	4.159	3.27e-05	***
es02w1quite good	0.0349974	0.0273920	1.278	0.201458	
es02w1quite bad	0.0602373	0.0293803	2.050	0.040413	*
es02w1very bad	0.0894609	0.0348295	2.569	0.010254	*
re02w1quite religious	-0.0972562	0.0210394	-4.623	3.93e-06	***
re02w1somewhat non-religious	-0.1532296	0.0229003	-6.691	2.57e-11	***
re02w1not at all religious	-0.2233065	0.0233354	-9.569	< 2e-16	***
AGEW1R	0.0050428	0.0003538	14.253	< 2e-16	***
MDO1W1	0.2698783	0.0117185	23.030	< 2e-16	***
MAU1W1	0.2262026	0.0098006	23.080	< 2e-16	***
alienation:countryGermany	-0.0206653	0.0349901	-0.591	0.554825	
alienation:countryHungary	-0.1240755	0.0375378	-3.305	0.000958	***
alienation:countryItaly	-0.0405780	0.0369873	-1.097	0.272681	
alienation:countryNetherlands	-0.0263111	0.0364484	-0.722	0.470420	
alienation:countryPortugal	-0.1194456	0.0489216	-2.442	0.014672	*
alienation:countryPoland	-0.0670970	0.0401532	-1.671	0.094805	.
alienation:countryFrance	-0.0945743	0.0343158	-2.756	0.005881	**

Adj. R2 = 0.5692

Conclusions and Discussion

- We have now shown that alienation can be used as a predictor for group-focused enmity.
- We can see, that alienation had more impact on group-focused enmity in Germany, Great Britain, and Netherlands. In Hungary and Portugal, the model showed the weakest explanatory power.
- Mediation effects? (Alienation => GFE)

Thank you for your attention!

ekaterina.lytkina@gmail.com

This report was presented at the 5th LCSR International Annual Conference “Cultural and Economic Changes under Cross-national Perspective”.

November 16 – 20, 2015 – Higher School of Economics, Moscow, Russia.

<http://lcsr.hse.ru/en/conf2015>

Настоящий доклад был представлен на V ежегодной международной конференции ЛССИ «Культурные и экономические изменения в сравнительной перспективе».

16-20 ноября 2015 года – НИУ ВШЭ, Москва, Россия.

<http://lcsr.hse.ru/en/conf2015>