

# ***Loneliness and Urbanization in Europe: A Multi-level Approach ?***

*(New Senior Researcher Project Proposal)*

Christopher Swader

Collaborators: Tatiana Karabchuk, Victoria Remezko

Laboratory for Comparative Social Research  
National Research University – Higher School of Economics



***“Summer in the city, I'm so lonely lonely lonely”***

*- Regina Spektor, Summer in the City*

loneliness



social isolation

## *What do we know?*

- ◆ Psychology. Link between loneliness and depression (also in our data)
- ◆ Sociology. **More lonely: Teens and the elderly, immigrants, materialists.** Religion, internet-> ambivalent.
- ◆ Loneliness in Russia: **urbanism and individualism.** The city determinants of loneliness are different (values matter, but ambivalently)
- ◆ These urban and individualist effects need to be more broadly tested

## *Research Question*

- ◆ What are the roles of both **urbanization** and of **individualist** values in relation to **objective social isolation** features in predicting loneliness?
- ◆ Secondary: Why are **Eastern European** rates of loneliness so high compared to those in **Western Europe**?

# *Scientific Contributions*

- ◆ Highlighting the **role of individualism** in relation to subjective loneliness outcomes.
- ◆ Illustrating the links between such individualism and levels of **urbanization**.
- ◆ Providing insight on the reasons for **differentiation in loneliness outcomes in Europe**. (compare to SWB)
- ◆ Motivating further in-depth studies of loneliness as a distinctly sociological phenomenon. Loneliness is arguably even more innately 'sociological' than is happiness.

# *Hypotheses*

- ◆ **Urbanization will predict greater loneliness, but these effects will be usurped by individualism** (alone and as an interaction with social isolation).
- ◆ This is because individualism is the mechanism through which urbanism exercises its effects on subjective loneliness.
- ◆ Individualism → enhanced loneliness ->self-centric behavior.

(YES! I admit that individualism also does great things. This is no reason to ignore loneliness.)

# *Methods*

- ◆ ESS 2006, 2010, 2012. Module that includes loneliness question.
- ◆ Max country sample.
- ◆ Multi-level model

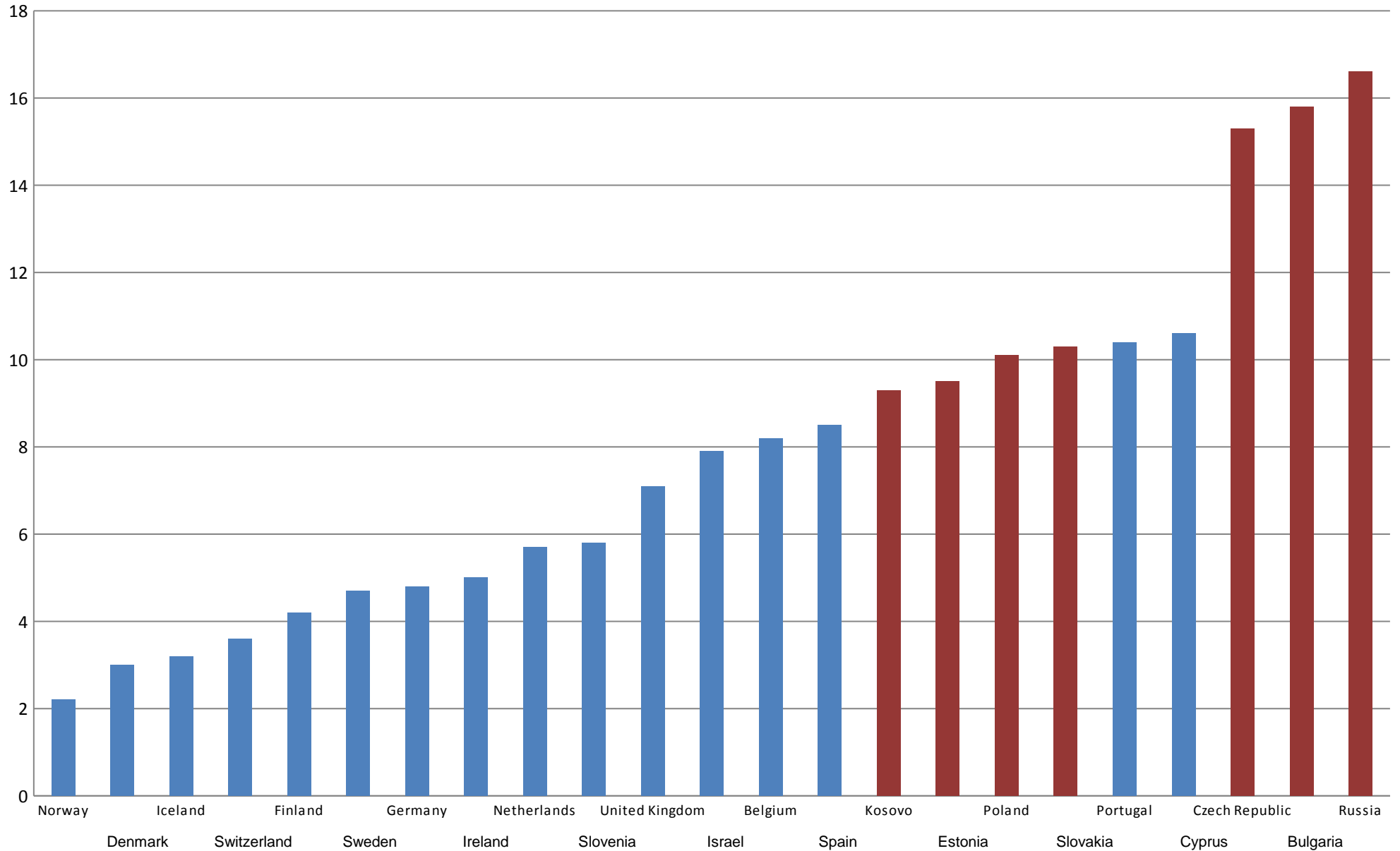
# *Methods*

- ◆ ESS 2006, 2010, 2012. Module that includes loneliness question.
- ◆ Max country sample.
- ◆ Multi-level model

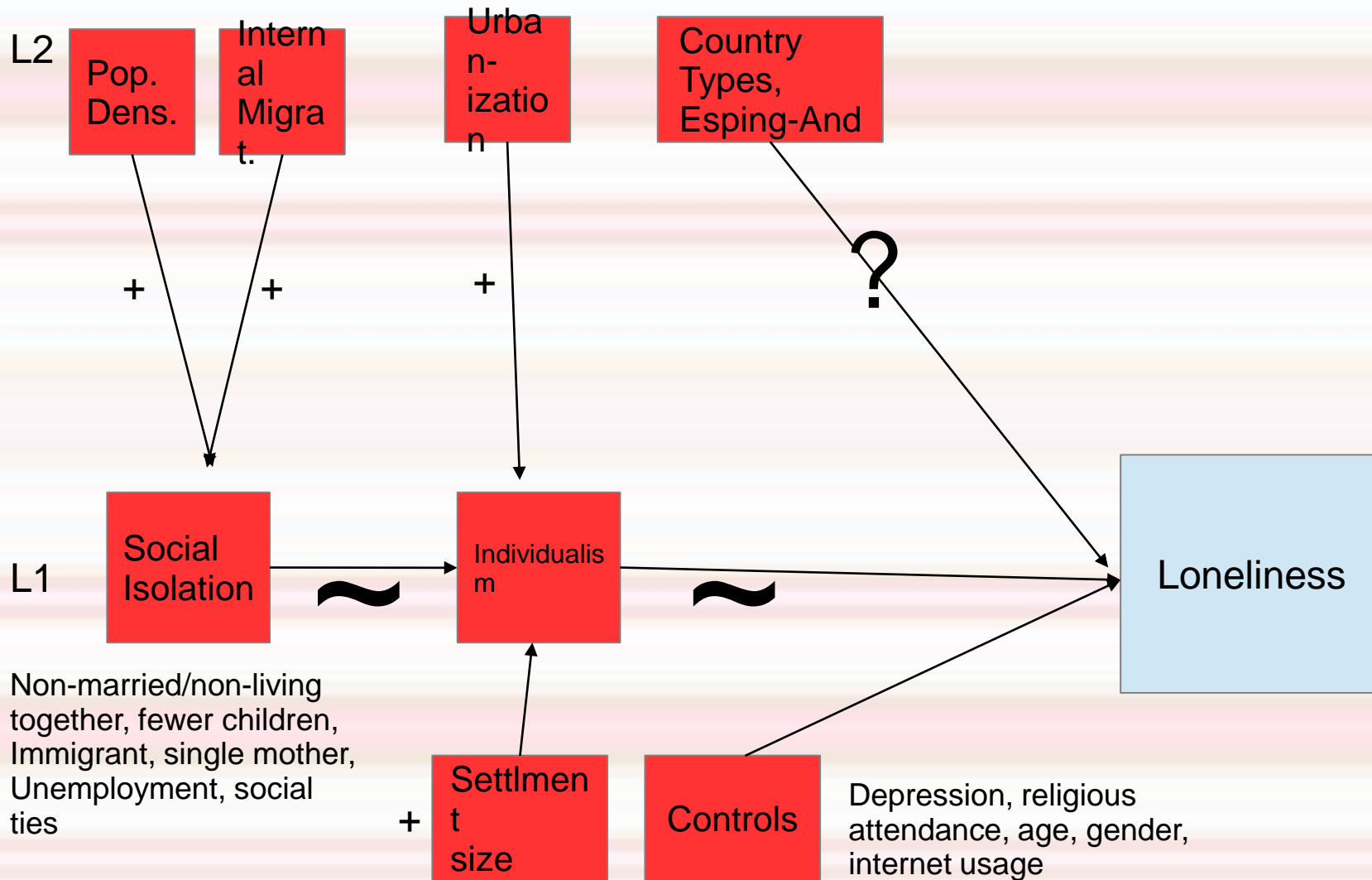


## % of very lonely people red - Eastern Europe

“felt lonely in the past week” all or almost all the time + most of the time



# Model



# ***Comments, suggestions, Questions?***

**“When it's summer in the city  
And you're so long gone from the city  
I *start* to miss you, baby... *sometimes*”**

- Regina Spektor, *Summer in the City*